



Social Monitoring Report

Project Number: 39038
15 February 2007

PRC: HEILONGJIANG ROAD NETWORK DEVELOPMENT PROJECT External Monitoring and Evaluation Report on Land Acquisition and Resettlement No. 1

Prepared by: Winlot Consulting Ltd.
Beijing, People's Republic of China

For Heilongjiang Province Jixi-Nehe Road Construction Project

This report has been submitted to ADB by Heilongjiang Province Jixi-Nehe Road Construction Project and is made publicly available in accordance with ADB's public communications policy (2005). It does not necessarily reflect the views of ADB.

Asian Development Bank

LOANED BY ASIAN DEVELOPMENT BANK

Heilongjiang Road Network Development Project

EXTERNAL MONITORING AND EVALUATION REPORT ON LAND ACQUISITION AND RESETTLEMENT

NO. 1

Prepared by



Winlot Counsulting Ltd.

15 February 2007

ABBREVIATIONS

ADB	Asia Development Bank
AP	Affected Persons
HHs	Households
EA	Executing Agency
RP	Resettlement Plan
LA&R	Land acquisition and relocation
LA	Land acquisition
PIU	Linquan Highway Project Implementation Unit
FMB	Forest Management Bureau
LHPCO	Linquan Highway Project Construction Office

CONTENTS

	Page
1	PREFACE 1
1.1	Source of Monitoring Tasks 1
1.2	Gist and Aim of External Monitoring 1
1.3	Monitoring Method and Plan 1
2	PROJECT INTRODUCTION 4
2.1	Engineer Introduction 4
2.2	The Progress of LA&R 5
3	BASE STATUS OF SAMPLE VILLAGE AND HOUSEHOLD 10
3.1	Sample Village Status 10
3.2	Sample Household Status 11
4	INFORMATION PUBLISHING 13
4.1	Sample Village 13
4.2	Sample Household 13
5	BUILDING RECONSTRUCTION 14
5.1	Impact and implementation 14
5.2	Habitation status comparison 15
5.3	Compensation for land acquisition and houses 18
5.4	The house reconstruction cost 19
5.5	Housing land 20
5.6	Interim for Housing Construction 20
5.7	Evaluation and Complaint 21
6	LAND ACQUISITION 22
6.1	Impact from the land acquisition 22
6.2	Compensation for the land acquisition 23
6.3	Land adjustment 23
7	GRIEVANCE AND APPEAL MECHANISM 24
7.1	Procedure 24
7.2	Implementation 24

8	TRAINING AND THE EMPLOYMENT	25
	8.1 Training	25
	8.2 Employment during the construction	25
9	INCOME AND POVERTY	26
	9.1 Income Situation	26
	9.2 Poverty population	29
10	CONCLUSION AND SUGGESTIONS	32
	10.1 Conclusion	32
	10.2 Suggestions	32

1 Preface

1.1 Source of Monitoring Tasks

1. According the requirement of ADB, in order to insure the work of land acquisition and resettlement can be conducted according the *Plan of Land acquisition and Resettlement*, the proposed Linquan highway should adopt external monitoring system. Therefor, Heilongjiang Expressway Construction Management Bureau invited Winlot Consulting Ltd. to conduct the external monitoring work.

1.2 Gist and Aim of External Monitoring

2. The external monitoring work must be conducted conforming to policy of resettlement rule and law and ADB's resettlement policy. It contents monitoring the progress of LA&R and effect of implementation.

3. The objective of external monitoring and evaluation include the following: (i) to make sure whether the living standard of influenced people haven't fallen. If the living standard fell, its reason must be found and take countermeasures; (ii) to evaluate the efficiency and outcome and influence and continuity of LA&R¹ work. If any problems were found, their reasons should be studied. Then the report should raise some feasible measures to Linquan Highway Project Construction Office (LHPCO).

4. The report sums up LA&R monitoring status before Jan. 15 2007. The report is written for the first monitoring work. Before Jan.15 2007, LA&R work hasn't been spread in the round, the main monitoring work this time is set up database for sample survey.

1.3 Monitoring Method and Plan

5. The external monitoring adopts quantitative analysis and qualitative analysis.

¹ LA&R means land acquisition and resettlement.

6. Winlot Consulting Ltd. set up survey groups² and start to design survey questionnaires after getting commission. The questionnaires include: (i) the statistical material and status of county and city; (ii) village status and household status. The questionnaire set household survey on the emphases, in order to set up database easily; (iii) information publishing; (iv) compensation; (v) house reconstruction; (vi) complaint etc.

7. Winlot Consulting Ltd. made a start at Jan.1 2007 and finished at Jan 28 2007. The object of village survey is the principal of influenced village. The object of household is adult of effected house.

8. The survey group had investigated 25 villages in eight counties/cities which cover the whole highway line. The surveyed villages include 502 land acquisition households and 46 resettlement households and one household who need to move tomb and 10 uninfluenced households.

9. All the information has been inputted in computer and analyzed through Excel. To the resettlement households, survey group have taken photos for their house in order to make comparison the house before and after resettlement.

10. During investigation, the two survey groups had some informal discussions with Mr Li Kai³ and Mr Lij Jiaguo⁴ and other related departments. Then made knowledge of the whole progress.

11. Accumulated up to the end of survey, only about 10% LA&R work just had been done. So the internal monitoring hasn't been done by LHPCO.

12. The investigation work was divided two parts and was done by two survey groups respectively. All of the survey work was finished by Jan.28 2007. The data imputing and processing work was closed at Feb.5 2007.

13. The schedule of the external monitoring survey see table as follows:

² Winlot Consulting Ltd. sets up two survey groups

³ Who is deputy director , responses for LA&R work at LHPCO.

⁴ Who is deputy director , responses for LA&R work at LHPCO.

Table 1 External Monitoring Survey Schedule(First Time)

Site	Time	Survey Group	Content
Tieli City	Jan.1 2007	Group 1 Group 2	Discuss with EA and make knowledge of LA&R's progress
Taoshan Forestry Bureau	Jan.8.2007-Jan.10.2007	Group 1	Village and household survey
Tieli City	Jan.8.2007-Jan.10.2007	Group 1	Village and household survey
Qing'an County	Jan.11.2007-Jan.14.2007	Group 1	Village and household survey
Hailun City	Jan.8.2007-Jan.11.2007	Group 2	Village and household survey
Baiquan County	Jan.15.2007-Jan.18.2007	Group 2	Village and household survey
	Jan.15.2007	Group 1 & 2	Finish monitoring schedule report
Suiling County	Jan.11.2007-Jan.15.2007	Group 2	Village and household survey
Tonghe County	Jan.15.2007-Jan.21.2007	Group 1	Village and household survey
Fangzheng County	Jan.23.2007-Jan.25.2007	Group 2	Village and household survey
Linkou County	Jan.19.2007-Jan.22.2007	Group 2	Village and household survey
Tieli City	Jan.26.2007-Jan.30.2007	Group 1 Group 2	Discuss with EA and raise problems and next countermeasure
	Feb.1.2007-Feb.5.2007	Group 1 & 2	Finish inputting work
	Feb.6.2007-Feb.15.2007		Finish external monitoring report.

2 Project Introduction

2.1 Engineer Introduction

14. The Project of Linkou to Baiquan Highway of Class 2 is one of the trunk highway networks of the Highway and Watercourse Traffic Development and Planning Reference to Enriching Northeast Ancient Industrial Base, and the line is along Linkou, Fangzheng, Tonghe, Tieli, Qing'an, Suiling, Hailun to Baiquan. The construction distance of the main road amounts to 427.995km and the Project is the first main road of the highway going through from east to west in the middle of Heilongjiang to complete the highway road construction of Heilongjiang. The linking roads of the Project are totally 22 with distance of 170.383 km.

Table 2 Each Section Distance of Main Road of Linquan Highway

No.	Section		Length(km)	Grade
1	Linkou to Gucheng	K63+152.240~k77+231.169	14.079	Class II
	Jiatan to Daluo	K116+000~k204+587.074	88.254	Short chain 332.757m
2	Fangzheng to	K245+490~k268+897	21.701	Class I and Class II
		K245+490~k260+620	13.424	Class I
		K260+620~k268+899	8.277	Class II
3	Tonghe to Tieli	K268+900~k408+2674.9	155.429	Long chain 15.928km
				Long chain 274.173
4	Qing'an to Suiling	K433+600~k503+893.1	70.271	Class II
5	Hailun to Baiquan	K543+267.89	78.261	Class II
	Sub-total		8.277	Class I
			419.718	Class II
	Total		427.995	

Table 3 Each Link road distance and Grade of Linquan Highway

No.	County(City)	Branch Name	Grade	Length(km)
1	Linkou County	Gucheng Branch	Class IV	1.386
2	Linkou County	Sandaotong Branch	Class IV	27.565
3	Linkou County	Lianhua Branch	Class IV	34.356
4	Linkou County	Dioling Branch	Class IV	5.978
5	Linkou County	Eight Women Digging River	Class IV	0.558
6	Tonghe County	Malanghe Branch	Class IV	0.861
7	Tonghe County	Taiping Forestry Centre	Class IV	12.092
8	Tieli County	Taoshan Branch	Class IV	2.401
9	Qing'an County	Qing'an Branch	Class II	2.49
10	Qing'an County	Qinlao Branch	Class IV	15.086
11	Suiling County	Shangji Branch	Class IV	1.399
12	Suiling County	Ni'erhe Branch	Class IV	4.642
13	Suiling County	Changshan Branch	Class IV	10.62
14	Suiling County	Houtou Branch	Class IV	5.156
15	Suiling County	Suiling Branch	Class II	2.582
16	Hailun County	Hailun Branch	Class II	2.136
17	Hailun County	Qianjin Branch	Class IV	4.445
18	Hailun County	Gonghe Branch	Class IV	11.445
19	Hailun County	Yonghe Branch	Class IV	1.5
20	Baiquan County	Sandaotong Branch	Class IV	2.088
21	Baiquan County	Xinsheng Branch	Class IV	19.597
22	Baiquan County	Xingguo Branch	Class IV	2
	Total			170.383

2.2 The Progress of LA&R

15. The proposed highway and its link roads will affect 8 counties, 36 townships, 130 administrative villages, and 6 forest bureaus, 24 forest stations. About 1,391 hectares of land will be permanently acquired, of which 92% is land for agricultural use, 4% is land for construction use, 4% is land unused. 532 ha or 38% of the total is arable land and 613 ha or 44% is forest land. Table 4 shows permanent land acquisition of the project. Land acquisition will directly affect the equivalent of 5,663 households(22,858 people)⁵. Another 428 hectares of land will be temporarily used during the construction phase. A total of 25,034 sq.m of structures will be demolished. 4,057 structures are urban houses, with 66 households (226 people) affected. 10,532 sq.m rural houses will be demolished, displacing 135 households(576 people). In addition, 147 workers will be indirectly affected by the 10,445 sq.m house demolition

⁵ The affected people will lose 8% of their land. Based on amount of farmland losses, and average farmland per capita in project area, the number of persons who need economic rehabilitation has been identified. Here, the persons needing economic rehabilitation refers to those who will lose all their farmland due to land acquisition. Based on such calculation, a total of 1,829 persons will need full economic rehabilitation.

of the 11 affected factories in a short period of time. In total, House demolition will affect 201 households (802 people) and 11 enterprises (147 people). Table 6 shows the impact of house demolition.

Table 4 Gross Land Acquisition of Linquan Highway

Unit: Mu

Item	Agricultural land		Construction land		Unused land		Total		Cultivated land		Forest land	
	Qty	Proportion	Qty	Proportion	Qty	Proportion	Qty	Proportion	Qty	Proportion	Qty	Proportion
Main road	16598.96	79.58%	669.83	3.21%	732.89	3.51%	18001.67	86.31%	7671.17	36.78%	8119	38.93%
Linking road	2600.21	12.47%	190.93	0.92%	65.03	0.31%	2856.17	13.69%	316.31	1.52%	1073.7	5.15%
Total	19199.17	92.05%	860.76	4.13%	797.92	3.83%	20857.84	100.00%	7987.48	38.29%	9192.7	44.07%

Table 5 Affected Population by Land Acquisition

County	Main road			Linking road			Total	
	Qty(ha)	AHs	APs	Qty(ha)	AHs	APs	AHs	APs
Linkou	137	1225	4944	36	42	192	1267	5136
Fangzheng	78	805	3220				805	3220
Tonghe	105	902	3624	3	10	51	912	3675
Tieli	59	493	2030	4	4	17	497	2047
Qing'an	61	594	2332	13			594	2332
Suiling	82	687	2870	5	3	9	690	2879
Hailun	60	95	383	34	44	166	139	549
Baiquan	75	389	1563	34	9	20	398	1583
Linkou Forest Bureau	56	125	512	32	16	62	141	574
Fangzheng Forest Bureau	164	133	521				133	521
Xinglong Forest Bureau	117	58	231	26	3	10	61	241
Taoshan Forest Bureau	190			4			0	0
Langxiang Forest Bureau	12						0	0
Tieli Forest Bureau	3	26	101				26	101
Total	1200	5532	22331	190	131	527	5663	22858

16. Totally the Project will demolish 4057.3sq.m of urban residents' houses including 3404.3sq.m of brick houses, 60sq.m of earth houses and 593sq.m of simple houses. Totally 66 households with 226 persons will be affected. Seen this in table 6.

Table 6 Affected Urban residents' building

County	Houses				Affected households	APs
	Subtotal	Brick house (sq.m)	Earth house (sq.m)	Simple house (sq.m)		
Fangzheng					1	4
Tonghe	3792.5	3247.5	60	485	64	217
Baiquan	183.8	93.8		90	1	5
Total	4057.3	3404.3	60	593	66	226

17. Affected by the Project, the 10532.5sq.m rural houses of the 8 counties and 3 forest bureaus should be demolished, affecting 135 households with 576 persons. Table 7 shows the affected rural houses.

Table 7 Affected Rural Houses

County		Houses					Affected houses	APs
		Subtotal	Brick houses	Earth and tile houses	Earth houses	Simple houses		
			(m ²)	(m ²)	(m ²)	(m ²)		
Qing'an	Zhoujia Sugar Refiner of Qing'an	1153	497	275	381		12	46
Suiling	Shangji town	1006	924			82	9	34
Linkou	Linkou Town		330				4	
	Jiantang Town		390		66		7	
	Diaoling Town		372		294	40	9	
	Sandaotong Town		250			50	3	
	Subtotal	1792	1342		360	90	23	95
Hailun	Qianjin Town		35		40	35	1	
	Shengli Town		22.5			22	1	
	Subtotal	154.5	57.5		40	57	2	9
Baiquan	Xiangrong village					132	1	
	Wangdamantoutun				4		1	
	Subtotal	136			4	132	2	7
Tieli	Nianfeng	1320	971		165	184	18	78
Tonghe	Fengshan Town		438		36		7	
	Fengyang village		600		141	210	10	
	Subtotal	1425	1038		177	210	17	70
Fangzheng Forest Bureau	Shuguang Forest Farm		910		6		13	
	Chenjialiangzi Business Station		220			80	6	
	Jiling Business Station		546		180	202	8	
	Subtotal	2144	1676		186	282	27	114
Xinglong Forest Bureau	Dongfeng Forest Farm	783	238		545		14	76
Taoshan Forest Bureau	Fendou Forest Farm		82		86		2	
	Shanghulan Forest Farm		165		286		9	
	Subtotal	619	247		372		11	47
	Total	10532.5	6990.5	275	2230	1037	135	576

Note: the rural houses of 10532.5 m²

18. In the Project there are 11 enterprises of 3 counties affected, with 7696.8sq.m brick houses, 2420sq.m workshops and 328sq.m simple houses are to be affected. Among the affected enterprises, Tonghe Paper Company, Tonghe Native Products Company, Tonghe Jufeng Rice Plant, Tonghe Jianhua Freezer had been in production cessation, having no APs. In the other 7 enterprises totally 147 persons will be affected. Table 8 and table 9 show the affected enterprises.

Table 8 Affected Equipments and Employees of the Enterprises and Institutions

No.	Name of Enterprises	Gross Employees	Annual Salerom (CNY 10,000)	Capital Asset (CNY 10,000)	Main Business	Business Actuality	APs
1	Tonghe Paper Company	75			Cooker process	Production cessation(stripped down)	Production cessation, no actual impact
2	Tonghe Native Products Company	80			Commerce circulation	Production cessation(stripped down)	Production cessation, no actual impact
3	Tonghe Chunxiao Co.,LTD	6	560	186	Pre-product, timber product	Production and business	6
4	Tonghe Jufeng Rice Plant	38		300	Foodstuff process	No production	No APs
5	Tonghe Agricultural Machine Company	18			Agricultural machinery sales	Production and business	18
6	Tonghe Jianhua Freezer	18	53	100	Freezing stock	No production	No APs
7	Tongliao Timber Products Co.,LTD	33	90	50	Timber product, machinery process	Production and business	33
8	Suiling Dahekou Rice Co.,LTD	20		80	Rice process	Production and business	20
9	Suiling Zhijun Rice	30		120	Rice process	Production and business	30
10	Suiling Wanjun Rice	20		200	Rice process	Production and business	20
11	Baiquan Heshun Liquid Gas Station	20	209	420	Liquid gas	Production and business	20

Table 9 Affected Building of Enterprises

No.	Name of Enterprise	Subtotal	Brick House (m ²)	Work Shop (m ²)	Simple House (m ²)
1	Tonghe Paper Company	1448	1448		
2	Tonghe Native Products Company	2091	2091		
3	Tonghe Chunxiao Co.,LTD	50	50		
4	Tonghe Jufeng Rice Plant	68	68		
5	Tonghe Agricultural Machine Company	2120	1920		200
6	Tonghe Jianhua Freeze	893	893		
7	Tongliao Timber Products Co.,LTD	782	654		128
8	Suiling Dahekou Rice Co.,LTD	750	180	570	
9	Suiling Zhijun Rice	1026	156	870	
10	Suiling Wanjun Rice	1120	140	980	
11	Baiquan Heshun Liquid Gas Station	96.8	96.8		
	Total	10444.8	7696.8	2420	328

Note: source is extracted from *Plan of Land acquisition and Resettlement of Linquan highway in Heilongjiang province*

3 Base Status of Sample villages and Household

3.1 Sample Village Status

19. Survey groups select 25 villages and 1 residents' committee from 130 influenced villages and 2 forestry station from 24 forestry station to investigate. The distributing of selected sample villages see table 10. The sample survey villages are sampled from the most seriously influenced villages by the land acquisition.

Table 10 Distributing of Sample Villages

County	Township	Village	LAH	RH	R-tomb	Uninf.
Hailun	Qianjin	Group 1 of Shengli village	19			
	Yonghe	Group 9 Qunzhong village	18			1
	Hainan	Dongxin village	20			
Suiling	Ni'erhe	Fubei	25			
	Shangji	Shangji	19		1	
Tieli	Nianfeng	Group 1 of Lingyunshan village	16			
		Group 1 2 & 3 of Aimin village	28	6		
	Wangyang	Group 4 of Hongguang village	18			
Baiuan	Sandao	Group 2 of Hexin village	20			
	Xingguo	Jiangjia village group	20			
	Baiquan	Group 9 of Yongjiu village	14			
Fangzheng	Deshan	Anle village	15			
		Fengyu village	31			
	Songnan	Xiangyang village	40			
Qing'an	Jiusheng	Group 6 of Jiuwang village	17			
	Zhifu	Lanhe village	7			
		Gengxin village	18			
Linkou	Jiantang	Hexi village	24	3		
	Diaoling	Group 1 of Sihe village	30	2		
		Sanjiazi village	30	4		
Tonghe	Fengshan	Shuanglong village group	9			1
		Fengyang village group	0	3		
		Fengshan village group	13			7
		Sima village group	15			1
	Tonghe	Fuxing village group	15			
		Second Residents' Committee of Dongxing street	0	20		
Taoshan Forestry Bureau	Shanghulan Forestry Centre		4	3		
	Nanhe Forestry Centre		17	5		
Total			502	46	1	10

Note: LAH means land acquisition household; RH means Resettlement household; R-tomb means need to move tomb household; Uninf. means uninfluenced household.

20. Linquan highway influences 6553⁶ households in total. The survey covers 25 villages and 2 forestry station and 1 , which have 7315⁷ households, of which there are 1835 influenced household. Two survey groups investigate 559 household.

3.2 Sample Household Status

21. The survey investigates 559 household in total. Figure 1 is class hierarchy of the sample sort. Among 559 survey samples, there are 502 land acquisition households、46 resettlement households、one moving tomb household and 10 uninfluenced households.

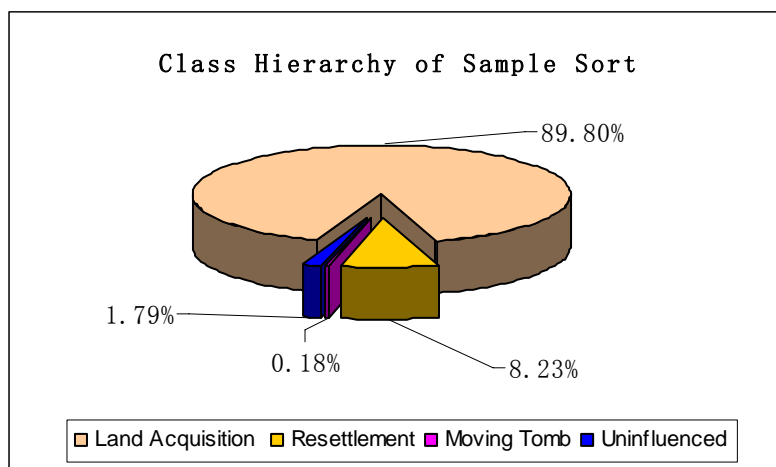


Figure 1 Class Hierarchy of Sample Sort

22. In 559 household survey samples, there are 549 households which are influenced directly by the land acquisition, account for 98.21% of whole samples. There are 13 minority households (2.3%), 11 households(2.0%) which have handicapped, 2 Wubao households (3.6‰) and 71 poverty households (12.7%). The distribution of these household is shown in figure 2.

⁶ The checking work of land acquisition is still ongoing.

⁷ Including influenced household and uninfluenced household.

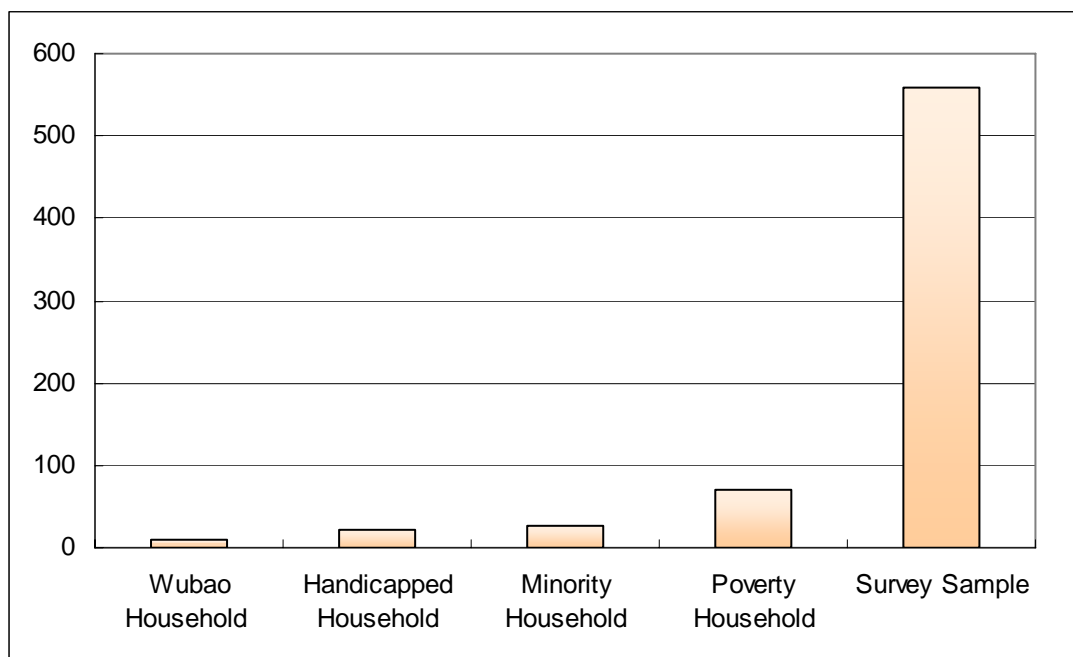


Figure 2 Distribution of Special Household and Total Sample

23. From survey samples, there are 16 minority households from 549 affected households. In which, there are 12 land acquisition households and 4 resettlement households. The distribution status is shown in table 11.

Table 11 The Distribution Status of Minority Affected Household

Village	LA-Household	R-Household
Fengyu Village(Fangzheng County)	2	
Quanzhong Village(Hailun County)	1	
Fubei Village(Suiling County)	1	
Lingyun Village(Tieli County)	2	
Hongguang Village(Tieli County)	1	
Aimin Village(Tieli County)	4	2
Shuangfu Village(Qing'an County)	1	
Second Residents' Committee Dongxing Street(Tonghe Village)		1
Fengyang Village(Tonghe County)		1
Total	12	4

4 Information Publishing

4.1 Sample Village

24. According to survey, 25 villages, 2 forestry stations and one residents' committee which were investigated. Four villages⁸ they are Aimin village (Nianfeng township Tieli county), Shengli village (Qianjin township Hailun county), Sanjiazi village (Diaoling township Linkou county) and Xiangyang village (Songnan township Fangzheng county) have received <RP Information Booklet>.

25. All affected households in the investigated villages, forestry stations and residents' committee had been informed things referring to LA&R by notice or by broadcast. 28.6% per cent of village(8 village group) have placarded the criterion of LA. 28.6% per cent of village(8 village group) have discussed some thing referring to LA with affected people. Affected households of Fengshan village group, Sima village and Fuxing village group have gained LA compensation allowance. Other villages are still in checking LA's quantity.

26. After investigating villages which have post information about of LA and its compensation criterion, it is found villages haven't given any explanation for law and rule of LA's compensation criterion, and county land bureau haven't explained it either. Some villagers know LA&R's policy through newspaper and TV news. But they couldn't acknowledge whole aspect of provincial policy and national policy, villagers had gaining for LA's compensation criterion.

4.2 Sample Household

27. After investigating, all villagers have known LA&R by villages' notice or broadcast. 19.3% per cent villagers have seen LA compensation criterion and 51% per cent villagers have discussed LA and its compensation criterion with villages. Accumulated up to Jan.15.2007, 8.4% per cent affected households have gained LA compensation allowance.

⁸ Their affected household account for 22.77% for survey affected households.

5 Building Reconstruction

5.1 Impact and implementation

28. Total 40 house-hold needing relocated were investigated during this survey, including 163 influenced people. There are 26 relocated household living in rural area with 95 influenced people. The distribution of surveyed household is listed in table 12.

Table 12 Impact to the Relocated Building Demolition

County /City	Building for Urban resident			Building for Rural resident			Building for Enterprise		
	Building Area (Sq. m)	Influenced HH	Influenced Individual	Building Area (Sq. m)	Influenced HH	Influenced Individual	Building Area (Sq. m)	Influenced Enterprise	Influenced Individual
Linkou				1169.6	9	35			
Fangzheng									
Tonghe	1296	20	68	165	3	11	3000	1	27
Tieli				567	6	25			
Qing'an									
Suiling									
Hailun									
Baiquan									
Linkou FMB									
Fangzheng FMB									
Xinglong FMB									
Taoshan FMB				509.9	8	24			
Langxiang FMB									
Tieli FB									
Total									

Note: FMB-Forest Management Bureau

29. Only two households had finished new house construction by the end of January 2007 in Hulan Forest Management Bureau, these two household get the information of relocation, but they just finished the building construction, did not settle in the new house. Most of the household in other counties did not start to build new building for the whether of severe winter and fund problem.

5.2 Habitation status comparison

30. Two households still lived in old house which will be removed even they had built the new house. They plan to settle in new house after spring when the weather becomes warm. Figure 3 and figure 4 shows the comparison for the new building and old building, and we can find that the new build improve the habitation obviously.



Figure 3 and 4 New and Old house for Mr. Lian Fuhai

31. The new Songhuajiang River bridge located in the urban and rural copulae of Tonghe County township, many house need to be relocated, these houses are the emphases for survey. Total 20 households were sampled for survey from the Second Residential Committee, Dongxi Street, Tonghe County. The current habitation status before relocated is shown in figure 5 to figure 10.



Figure 5 and 6 Old House for Mr. Bi Xianyou's (left) and Mr. Wang Shuhuan (right)



Figure 7 and 8 Old House for Mr. Zhao Fengyun (left) and Mr. Chen Fumin (right)



Figure 9 and 10 Old workshop for Tonghe Farming Machine Co. (left) and Tonghe Jufeng Rice Processor (right)

32. Total 44 households did not start the new build construction work in all of the sampled 46 relocated households. More detail comparison analysis work can not be done by this stage. But the survey team setup the database for all of the 46 households as the baseline for future monitoring. The detail information for each sampled household is shown in table 13.

Table 13 Detail information for sample households

Village name	House—holder name	Populaion	Total area Sq.m	Rooms	House Structure	Note
Group1,2,3, Aimin Village,	Li Xiang	2	45	3	Brick-concrete	
	Song Fuwen	4	118	4	Brick-concrete	

Nianfeng Twonship, Tieli City	Zhao Weichun	4	48	2	Wood-tile	
	Wu Xiangwen	7	60	3	thatched cottage	
	Bai Meirong	5	248	8	Brick-concrete	
	Zhu Caoyang	3	48	2	thatched cottage	
Nanhe Forestry centre	Song Jiawang	4	40	2	Brick-wood	
	Han Shankui	2	37.5	1	Brick-wood	
	Xiang Falin	3	43.4	2	Brick-wood	
	Chi Xuezhong*	4			Brick-wood	
	Li Dayu	3	50	1	Brick-wood	
Shanghulan Forestry centre	Lian Fuhai	3	140	7	Brick-wood	Built new house
	Gao Xinglin	3	89	4	Brick-wood	
	Jiang Keyun	2	60	3	Brick-wood	Built new house
Sihe Village, Diaoling twon	Cui Jishna	5	60.6	1	Brick-wood	
	Jiang Hongyi	3	96	5	Brick-wood	
Sanjianzi Village, Diaoling twon	Xu Xiang	2	154	4	Brick-wood	
	Zhang Dianchen	8	72	6	Brick-wood	
	Wang Jiaquan	3	136	3	Brick-wood	
	Du Chnagjin	3	106	2	Brick-wood	
Hexi Village, Jiantang Town	Yin Yuande	5	75	3	Brick-wood	
	Feng Zhenxiang	3	80	2	Brick-wood	
	Wang Xiaotai	3	390	9	Brick-wood	
No.2 Residential Committee, Dongxing St. Tonghe County	Zhang Rong	2	72	3	Brick-wood	
	Wang Youzhi	5	80	3	Brick-wood	
	Zheng Guilan	7	77	3	Brick-wood	
	Li Yuan	3	54	1.5	Brick-wood	
	Cai Sen	6	153	5	Brick-wood	
	Yang Wenfa	3	30	1	Brick-wood	
	Qu Zhonglin	3	85.5	3	Brick-wood	
	Chen Haijie	2	37	1.5	Brick-wood	
	Zhang Hu	2	70	3	Brick-wood	
	Huang Dianlin	1	50	1.5	Brick-wood	
	Liang Jun	3	84	3	Brick-wood	
	Wang Shuhua	3	50	1.5	Brick-wood	
Ding Wen	5	54	3	Brick-wood		

	Xia Aibin	3	37	1.5	Brick-wood	
	Bi Xianyou	3	125	4	Brick-wood	
	Wang Caochen	3	54.3	3	Brick-wood	
	Xu Fengrui	2	52.2	3	Brick-wood	
	Zhao Fengyun	3	39	1.5	Brick-wood	
	Wang Gui	3	46	1.5	Brick-wood	
	Gao Yunhai	6	46	1.5	Brick-wood	
Fengyang Village, Fengshan Twon, Tonghe County	Sun Shouyun	4	45	1	Brick-wood	
	Liu Shan	2	40	3	Brick-wood	
	Chen Fu	5	80	2	Brick-wood	
Tonghe Farming Machine Co.	Wang Qiang	27	3000		Brick-concrete	

Note: * The householder (Mr. Chi Xuezhong) do not know the construction area need to be relocated.

5.3 Compensation for land acquisition and houses

33. Tonghe Songhuajiang Bridge is the control engineering in the whole project from Linkou to Baiquan, the land acquisition and house relocation work did well than other counties and cities. Most other counties now are verifying the final land acquisition quantity and relocation quantity.

34. There are 44 households in all of the sampled households received the compensation for land acquisition. These farmers who get the compensation are located in Fengshan Village and Sima Village, Fengshan Township, Tonghe County, Daxing Village, Tonghe County. Through the survey we found that some villager did not draw the compensation money because they have dissidence with the compensation standard.

35. The total permanent land acquisition in Tonghe County is 100.5503 ha., where Irri-land is 35.322 ha., take account for 35.13 percent, dry land is 39.7618 ha, 39.54 percent, vegetable land is 1.6757 ha., vegetable land with canopy is 0.0955 ha., vegetable with palm house is 0.0090ha., rural road is 0.5623 ha., farmland irrigation works is 0.243 ha., badlands is 0.5703 ha., industrial land is 2.4764 ha., house land is 4.5609 ha., shrubbery land is 1.1596 ha., breed aquatics water is 0.2483 ha., woodland is 9.3577 ha., none utilized land is 5.4698 ha.

36. The total land acquisition in Tonghe County came down to 15 villages in two townships, 595 households and 2261 people. In Tonghe Township total 6 villages, 164 households and 607 people were effected by the land acquisition, in Fengshan Township total 9 villages, 431 households and 1830 people were effected by the land acquisition.

37. While the external monitoring survey team conduct the survey, the Tonghe Land Management Bureau are verifying the relocated house area and its AP, relocated industrial building area and its AP, relocated business house area and its AP.

38. Tonghe Land Management Bureau are paying the land compensation and house relocation for the verified relocated household and acquired land. Tonghe Land Management Bureau had payed 4 million CNY to 356 households with 1350 AP in 10 villages

5.4 The house reconstruction cost

39. It is found that only two households (Jiang Keyun and Gao Xinglin) had built the new house by the end of January 2007. Most of the relocation households did not start the new house construction for the winter. The new house reconstruction cost are shown in table 14.

Table 14 House reconstruction cost

Cost component (CNY)	Jiang Keyun	Gao Xinglin
Land cost	0	5000
Construction material	33900-43900	43000
hire labour	16000	1800
Water, power and phone line cost	3000	2000
Fitment cost	25000-30000	15000
Tax	2100	2000
Total	85000-90000	90000
Fund source	Loan	Loan
Plan to repay the debt	Wait house compensation	Wait house compensation

5.5 Housing land

40. Most of the new relocated houses will build within the village. The arrangement for new housing land has two method: removal families build new house on their own contract land (need approved by village committee), or buy new land for house building.

41. Most of the urban removal families, living in No.2 group, Dongxing Road in Tonghe County, express that it is very difficult to get new housing land, the reason is that it is lack of land near the urban area in Dongxing Road, Tonghe Township. Most of rural removal households will not meet difficult to get new housing land. Some inconvenience removal household meet in some village is that new housing land will occupy some farmland which requires superfluous approval procedures, or the new housing land had some discommodious traffic or water source.

5.6 Interim for Housing Construction

42. By the end of January 2007, nearly all of the new house did not start build, so all of the 46 surveyed removal households still lived in their original house. Even two households finished new house construction work, but the two families still lived in their original house too. The interim work will start in May 2007 based on the weather condition in project area in Heilongjiang Province.

5.7 Evaluation and Complaint

43. All of the 503 surveyed affected households received the land acquisition notice, about 21.47 percent households knew the land compensation standard. 8.75 percent of the survey sample households received the land compensation money.

44. Among the households received land compensation, 57 percent are satisfactory with the land compensation standard, 43 percent are not satisfactory with both of the land compensation standard and its transparency, thereinto 34 percent of the households expressed that they will accept the compensation standard if they saw the documents for the compensation standard with red head of the government, only 9 percent of the households were not satisfactory with the compensation standard.

45. Two main reasons are for some households refusing to receive the land compensation, the first is that they feel not happy with the land acquisition quantity, there will leave many scattered small plot after the project construction, these small plot land will not be able to be ploughed by farming machine and will not be able to be irrigated, therefore these small scattered plot will become badlands, no any resolvent was found to solve these problems. The second reason is that some villagers find multifarious land compensation standard from unofficial channel, so they demur to the land compensation standards.

46. All of the 46 sample removal households receive the relocation notice. There are 43.47 percent of the removal households are the urban families, others are rural families. In generally the reconstruction work did not start for the winter whether, most of the removal households did not know what would happen for them. Most of the removal households expect allocation instead of house compensation. Most removal families hope to receive the detail explanation about the compensation standard and the calculational methods.

47. In rural area the removal households in Taoshan Forest Management Bureau did not have demurrals to the reconstruction. Two households had built new house to avoid the bother in the interim such as rent house. Some removal households in other villages said it is difficult for them to solve the housing land, if the village committee help them to arrange the housing land and receive the housing compensation as early they would feel satisfactory.

48. One surveyed household demur to his removal tomb and the compensation.

6 Land Acquisition

6.1 Impact from the land acquisition

49. Total 20,848.60 mu of land is permanently acquired for the main highway and link road construction, of which 17,999.5 mu is permanently acquired by the main highway, account for 86.3 percent, 2,856.17 mu is permanently acquired by the link road, account for 13.7 percent, 7,987.48 mu permanently acquired is farming land, account for 38.31 percent, 9,192.7mu is woodland, account for 44.09 percent. Total temporary acquired land is 6,413.27 mu for the project construction, of which 5,706.69 mu is for main highway, 706.58 mu is for link road. Total households affected by the land acquisition is 5663 households with 22,858 affected people.

Table 15 Affected population by the land acquisition

Counties/Cities	Main Road			Link Road			Total	
	Quantity (ha.)	Affected HHs	AP	quantity (ha.)	Affected HHs	AP	Affected HHs	AP
Linkou	137	1225	4944	36	42	192	1267	5136
Fangzheng	78	805	3220				805	3220
Tonghe	105	902	3624	3	10	51	912	3675
Tieli	59	493	2030	4	4	17	497	2047
Qing'an	61	594	2332	13			594	2332
Suiling	82	687	2870	5	3	9	690	2879
Hailun	60	95	383	34	44	166	139	549
Baiquan	75	389	1563	34	9	20	398	1583
Likou FMB	56	125	512	32	16	62	141	574
Fangzheng FMB	164	133	521				133	521
Xinglong FMB	117	58	231	26	3	10	61	241
Taoshan FMB	190			4			0	0
Langxiang FMB	12						0	0
Tieli FMB	3	26	101				26	101
Total	1200	5532	22331	190	131	527	5663	22858

Note: source from Resettlement Plan.

50. Total arable land is 100,572.8 mu in the 25 surveyed villages, of which 2,316.5 mu is acquired by the project, account for 2.3 percent of total arable land. Average arable land for each household is 14.28 mu, the average acquired arable land by each household is 1.31 mu, the average acquired arable land for each affected people is 0.33 mu, only account for 2.13 percent in the average arable by household, the impact to the household by the land acquisition is very less.

51. Total 16 minority households were affected by the land acquisition in 8 affected minority villages. Total acquired land is 33 mu for the 16 minorities households, account for 15.93 percent, average arable land is 13 mu by household and 0.825 mu by affected people, account for 6.34 percent of the household average.

52. It is found that the land acquisition impact to the household is very less, this reflect the characteristic for this reconstruction highway project, most section of this project is reconstruction based on the old road, less new land was acquired. The proposed project will improve the traffic condition for the project area, it will also reduce the land acquisition farthest.

6.2 Compensation for the land acquisition

53. There are 3 villages in the sample surveyed villages had finished land acquisition work, all of the affected households had received the land compensation. Other effected households did not verify the actual land acquisition quantity yet and therefore did not receive the land compensation.

54. The village committee of the three villages (Fengshan, Sima, Fuxing, Tonghe County) came to an agreement with the effected households for the land compensation assignment mode. All of the effected households in the three villages agreed to receive the land compensation to solve the land acquisition.

55. Other 22 surveyed villages did not pay the land compensation. 90 percent of the households want to get the replacement land from the village reserve land, 10 percent want to get cash compensation.

6.3 Land adjustment

56. Total 356 affected households in 10 villages received 4 million CNY for land compensation. These affected households did not accept the land adjustment. Other effected households were not sure to select which pattern to get the land compensation.

7 Grievance and Appeal Mechanism

7.1 Procedure

57. To solve the problems effectively during the construction and ensure the successful implementation of the construction and land acquisition, a transparent and effective letter grievance and appeal channel has been set up.

58. In the 25 surveyed villages/Forest stations, 85 percent of the informant knew where they can appeal when they had problems through television and other channels, but not clear to the procedure, 15 percent of the informant expressed that they are not clear or did not know the appeal procedure. The main reason for the informant is that most of the affected people were difficult to understand the regulations and articles for their literacy capacity. They need the related departments to explain the regulations to them more detailedly.

7.2 Implementation

59. About 90 percent of the engineering work did not start for the winter whether, most of the land acquisition work did not start, thus no any appeal was found during the external monitoring survey.

8 Training and the employment

8.1 Training

60. The proportion of the affected people by the land acquisition is very low because the average household land acquisition accounted for lower percentage in their owned land. But a training plan was prepared in RP to improve the affected people's skill for some villages which had relative bigger impact by the land acquisition.

61. The training plan did not implement by the end of January 2007, main reason is most land acquisition work did not start and most land acquisition quantity and detailed scope were still not verified.

8.2 Employment during the construction

62. The construction of the Project will cause a certain impact on the local communities. In order to enhance the APs benefits from the Project, the local residents will be encouraged to take part in the construction of the Project and create the advantage to utilize the local materials and labor force.

63. The survey showed that the Aps had the desire that they want take part in the project construction during the implementation. All of the surveyed village leaders said that some farmers were willing to take part in the construction and to accept the training for the construction work. But the people from the household with more farmland worried about they can not take part in the road construction while the harvest time, and they also worried this will effected the contractor to hire them.

64. There were not any villagers working for the road construction by the end of January 2007 for 90 percent of the road construction did not start.

9 Income and Poverty

9.1 Income Situation

- **Farmer Survey**

65. Based on the statistic for the 559 surveyed households, the household average overall income is 19,902 CNY, household average net income is 16,272 CNY, net income per-capita is 4,699 CNY. 33.6 percent of the surveyed household was indebted, the highest debt reach 45,000 CNY, the lowest is 200 CNY, the average debt is 5,635 CNY.

66. Household average net income for 14 minority household is 23,591.2 CNY, average per-capita income is 4,644 CNY, of which 7 households was indebted, the highest debt is 30,000 CNY and the lowest is 600 CNY, average debt is 11,629 CNY.

67. Most of the land acquisition households did not get the land compensation by the end of January 2007, all of them expressed that they did not know the changes for them after their land acquisition. But some farmer were afraid that their standard of living would go down after 3-5 years from the land acquisition for the limited land compensation and unable to use the land compensation without any skill.

- **Village Survey**

68. Based on the survey for the 25 villages, the village with the highest income is Sihe village in Diaoling Township (4,800 CNY), the village with the lowest income is Yongjiu village in Baiquan County (1,150 CNY), average income for 25 villages is 3,295 CNY. There were 11 villages with its average income down to the average line, account for 44 percent, two villages with lower average income of 2,000 CNY, account for 8 percent, 8 villages with average income from 2,000-3,000 CNY, account for 32 percent, 10 villages with average income from 3,000 to 4,000, account for 40 percent, 5 villages with the average income over 4,000 CNY, account for 20 percent.

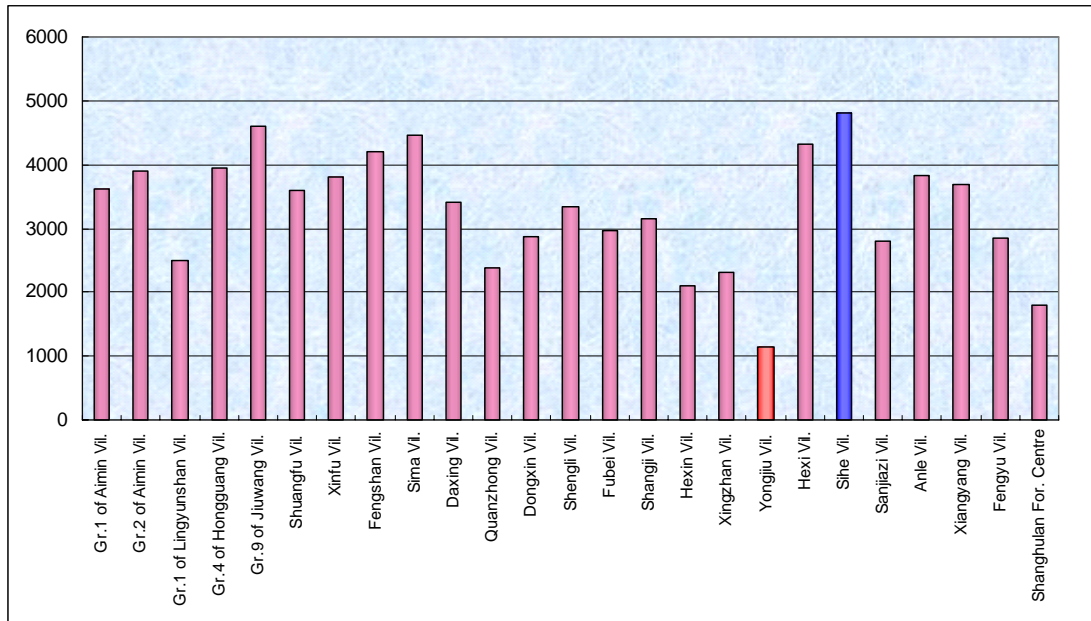


Figure 11 Comparison of the rural income per capita for 25 villages

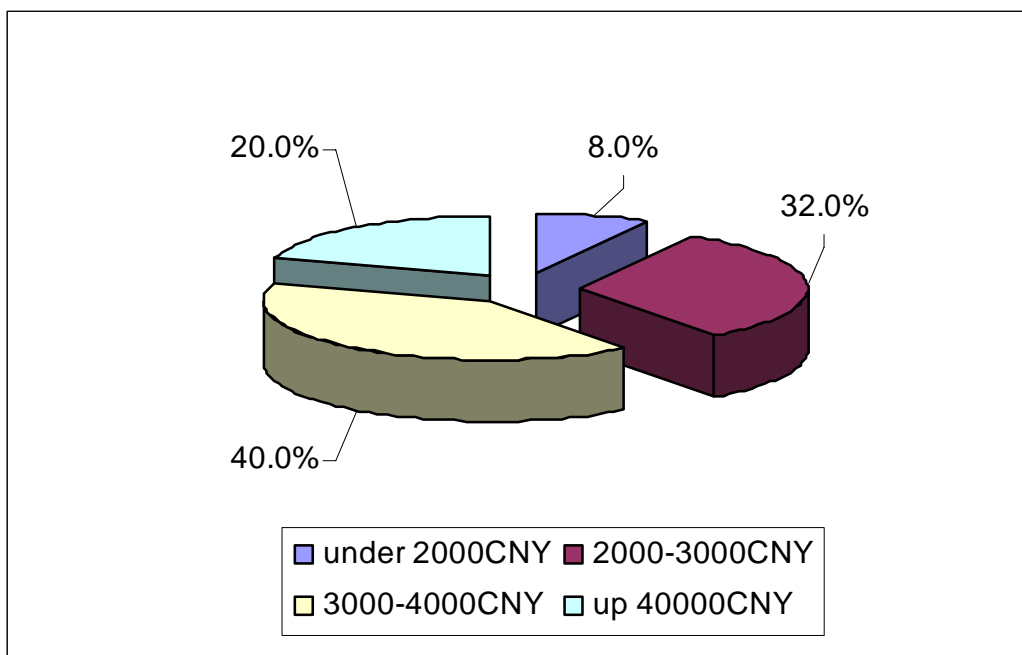


Figure 12 Structure of the rural income per-capita for 25 villages

69. The informant from the three villages had payed the land compensation think that the living level will increase provisionally in 2 to 3 years, but it will decrease after 3 year. The main reason is that the farmer receive the land compensation is one-off and temporary to them, no any related government department help farmers how to use the compensation to carry out the reproduction more reasonable. More farmers did not have and other skill, they only live on the farming with unitary planting such as paddy, corn and peanut.

- **Township Survey**

70. The survey team collected basic information for 18 townships. The township with the highest rural net income per-capita is Diaoling Township of Linkou County (4,637 CNY), the township with the lowest income is Xingguo Township in Baiquan County (1,259 CNY), average rural income per-capita for 18 townships is 3,299 CNY. There were 9 townships with its average rural income per-capita down to the average line, account for 47.4 percent (see figure 13).

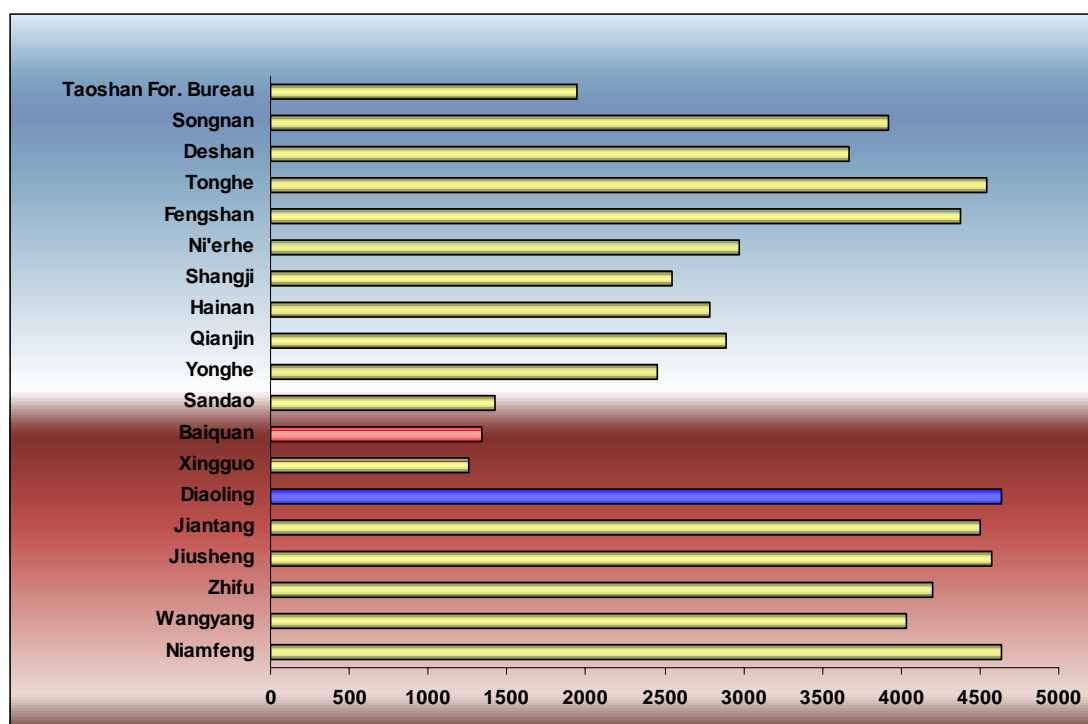


Figure 13 Comparison of the rural income percapita for 18 townships

- **County Survey**

71. Eight counties were surveyed. The county with the highest rural net income per-capita is Linkou County (4,829 CNY), the county with the lowest income is Baiquan County (1,093 CNY), the average rural income per-capita for 8 counties is 3,178 CNY. There were 4 counties with its average rural income per-capita down to the average line, account for 50 percent (see figure 14)

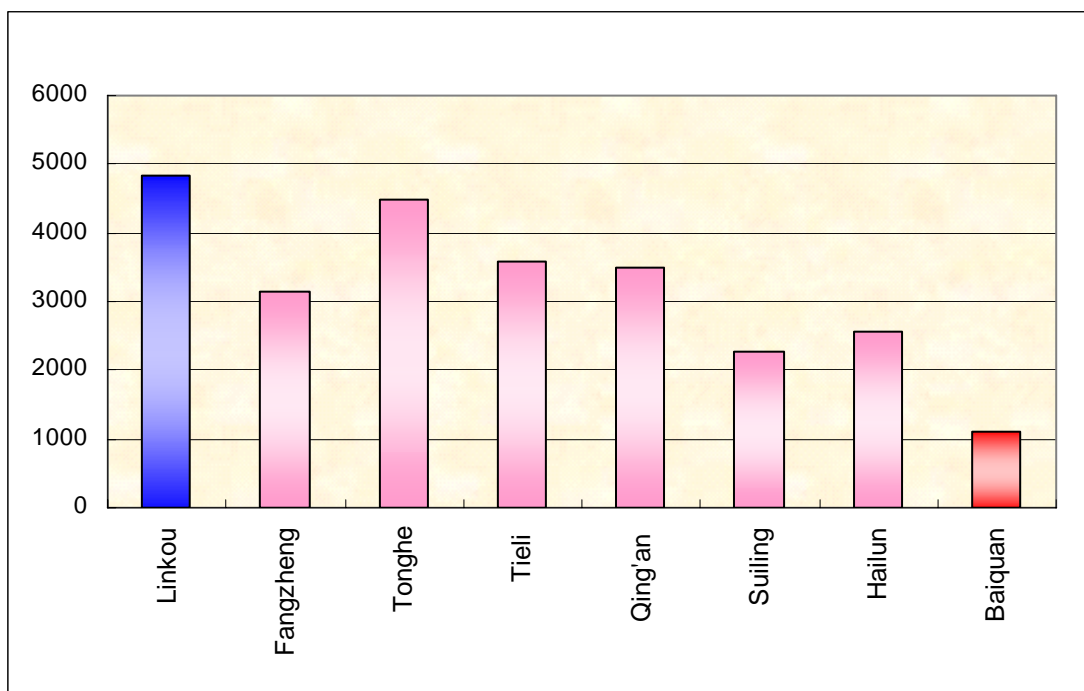


Figure 14 Comparison of the rural income percapita for 8 Counties

9.2 Poverty population

72. There were 16 villages, one forest station and one resident committee with poverty effected households in 25 surveyed villages, two surveyed forest station and one resident committee, account for 64,3 percent in all of the surveyed villages.

Table 16 Poverty HHs distribution within villages

County	Township	Village	Effected HHs	Surveyed HHs	Poverty Rate by all surveyed HHs	Poverty Rate by all effected HHs
Hailun	Qianjin	No.1 group of Shengli Village	19	19	10.53%	10.53%
	Yonghe	No.9 group of Qunzhong Village	18	19	10.53%	11.11%
	Hainan	Dongxin Village	20	20	0.00%	0.00%
Suiling	Nierhe	Fubei Village	25	25	8.00%	8.00%
	Shangji	Shanji	20	20	0.00%	0.00%
Tieli	Nianfeng	No.1 group of Lingyunshan Village	16	16	37.50%	37.50%

		No.1,2,3 group of Aimin Village	34	34	32.35%	32.35%
	Wangyang	No.4 group of Hongguang Village	18	18	16.67%	16.67%
Baiquan	Sandao	No.2 group of Hexin Village	20	20	5.00%	5.00%
	Xingguo	Jiangjia Tun of Xingzhan Village	20	20	10.00%	10.00%
	Baiquan	No.9 group of Yongjiu Village	14	14	21.43%	21.43%
Fangzheng	Deshan	Anle	15	15	0.00%	0.00%
		Fengyu	31	31	6.45%	6.45%
	Songnan	Xiangyang	40	40	5.00%	5.00%
Qing'an	Jiusheng	No.6 group of Jiuwang Village	17	17	0.00%	0.00%
	Zhifu	Lanhe	7	7	28.57%	28.57%
		Gengxn	18	18	27.78%	27.78%
Linkou	Jiantang	Hexi	27	27	18.52%	18.52%
	Diaoling	No.1 group of Sihe Village	32	32	21.88%	21.88%
		Sanjiazi	34	34	2.94%	2.94%
Tonghe	Fengshan	Shuanglong tun of Malonghe village	9	10	10.00%	11.11%
		Fengyang tun of Fengyang village	3	3	0.00%	0.00%
		Fengshan tun of Fengshan village	13	20	0.00%	0.00%
		Sima Tun of Sima village	15	16	0.00%	0.00%
	Tonghe	Fuxingtun of Daxing village	15	15	0.00%	0.00%
		No.2 resident committee, Dongxing St.	20	20	50.00%	50.00%
Taoshan FMB		Shanghulan Forest Station	7	7	0.00%	0.00%
		Nanhe Forest Station	22	22	18.18%	18.18%

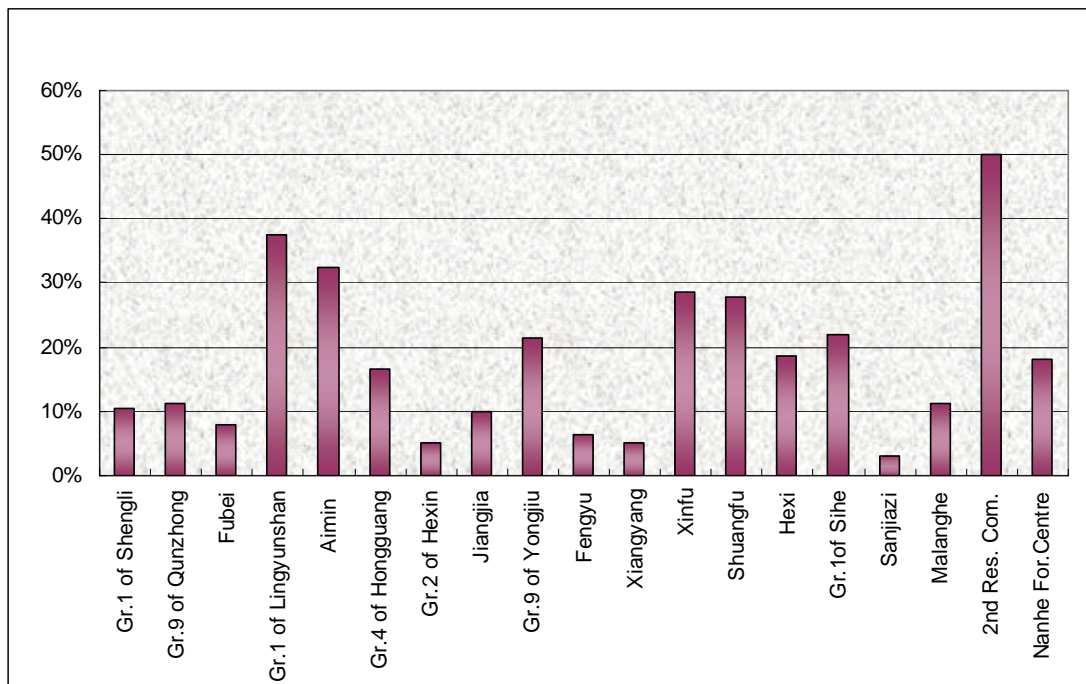


Figure 15 Poverty HHs rate and distribution

10 Conclusion and suggestions

10.1 Conclusion

73. The actual resettlement work was deferred about 4 months comparing with the RP, main reason is the special freezing weather in winter in Heilongjiang Province, over the control by manpower.

74. All of the surveyed villages had informed the land acquisition HHs and relocation HHs about the resettlement plan. Most of the informants expressed that the Land Management Department did not explain the detail land compensation standard and the gist, so some effected HHs demurred to the compensation standard.

75. House relocation work will start principally on May 2007, and the effect HHs will remove to the new house after June 2007, the interim time is about two months.

76. Over 95 percent of the house relocation compensation did not pay to the relocated HHs because over 90 percent of the effected HHs did not start the new house construction in the winter time.

77. Total arable land acquisition is 2,316.5 mu in the 25 surveyed villages, account for 2.3 percent of total arable land in the 25 villages.

78. Most of the informants expressed that they would like to get the land adjustment instead of the case compensation after the new policy cancelling the agricultural tax.

79. The average rural income per-capita is 3,200 CNY, 64.3 percent of all the surveyed villages had poverty HHs. Some effected families worried for the future live.

10.2 Suggestions

80. PIU should achieve the resettlement work fully follow the RP.

81. Some effected families had the wish to take part in the construction, PIU should suggest the contactor to provide the priority of employment opportunity to the effected families.

82. PIU should supervise and urge the County Land Management Bureau and the township government to strengthen the explanation about the compensation standards, including the explanation for the related laws and regulation about the land management. If necessary the households, who have difficult to know and understand the related laws and regulations and land compensation standard, or have the demurral to the compensation standard, should be trained organizationally.

83. PIU should cooperate actively with the county land management bureau, township government and village committee to bring out the measures as soon as possible to deal with the irrigation and scattered leftover plot after the land acquisition.

Appendix

LOANED BY ASIAN DEVELOPMENT BANK

Heilongjiang Road Network Development Project

EXTERNAL MONITORING AND EVALUATION REPORT ON LAND ACQUISITION AND RESETTLEMENT

NO. 1

Social Economic Development
evaluation report

Prepared by



Winlot Consulting Ltd.

15 February 2007

Contents

1 BRIEF INTRODUCTION OF THE PROJECT.....	1
1.1 Introduction.....	1
1.2 Brief Introduction of the Project.....	1
2 SOCIO-ECONOMIC PROFILE OF THE PROJECT AREA.....	2
2.1 General Situation of the Administration in the Project Area.....	2
2.2 Population Distribution of the 8 Counties along the Highway.....	2
2.3 GDP and Average GDP of the 8 counties along the Highway.....	3
2.4 Analysis of the Industrial Structure of 8 Counties along the Highway.....	3
2.5 The First Industry.....	4
2.6 Residents' Income.....	5
2.7 Education and Sanitation Situation of the 8 counties along the Highway.....	6
2.8 Rural Poverty Situation of the 8 Counties.....	6
2.9 Minority Distribution in the 8 Counties along the Highway.....	7
2.10 Township Socio-Economic Situations in the Affected Area.....	8
3 SAMPLE SURVEY ON THE SOCIO-ECONOMIC SITUATION OF THE AFFECTED HOUSEHOLDS	13
3.1 Gender Features.....	14
3.2 Age Structure Feature.....	15
3.3 Nationality Structure Feature.....	16
3.4 Educational Degree Feature.....	16
3.5 Employment Feature.....	17
3.6 Income Situation	19
3.7 Expense Structure.....	19

Appendix

Heilongjiang Road Network Development Project

EXTERNAL MONITORING AND EVALUATION REPORT ON LAND ACQUISITION AND RESETTLEMENT

NO. 1

Social Economic Development evaluation report

1 Brief Introduction of the Project

1.1 Introduction

1. In order to know the socio-economic situation in the project region and the elementary circs of the population, the survey group carried out the primary socio-economic investigation from the Jan 2007. Furthermore, they implemented the household survey covering 559 households.

2. In survey period the servey group did the supplementary socio-economic survey . The survey group did a sample size survey of 559 households by the way of questionnaires and discussion and visit each government department of 8 counties. The natural and socio-economic situation of the 8 counties impacted directly by the project as below based on the fieldwork and the data which is offered by the statistics bureau is shown as follows.

1.2 Brief Introduction of the Project

3. The Project of Linkou to Baiquan Highway of Grade 2 is one of the main highway networks of the Highway and Watercourse Traffic Development and Planning Reference to Enriching Northeast Ancient Industrial Base, and the line is along Linkou, Fangzheng, Tonghe, Tieli, Qing'an, Suiling, Hailun to Baiquan. The construction distance of the main road amounts to 427.995km and the Project is the first main road of the highway going through from east to west in the middle of Heilongjiang to complete the highway road construction of Heilongjiang. The linking roads of the Project are totally 22 with distance of 170.383 km.

2 Socio-economic Profile of the Project Area

2.1 General Situation of the Administration in the Project Area

4. The basic administration districts of 8 counties are subordinated to 5 municipalities in Heilongjiang province which is influenced directly by the project is shown in Table A-1.

Table A-1 Natural Profile Of the 8 Counties

County	Land Area (Km ²)	Towns	Municipality
Bailun	3599	20	Qiqihaer
Helen	4667	23	Suihua
Suiling	4328	12	Suihua
Qingan	5469	14	Suihua
Tieli	6444	9	Yichun
Tonghe	5675	14	Ha'erbin
Linkou	7180.9	12	Mudanjiang
Fangzheng	3000	8	Ha'erbin

Data source: filled by county stat. Bureau

2.2 Population Distribution of the 8 Counties along the Highway

5. The population of the 8 counties along the highway amounts to 3,485 million, among which the urban population is 1,131 million, agricultural population is 2,354 million. The population of Hailun is the largest, 0.824 million, while the population of Fangzheng is the smallest which is only 0.235 million. Detailed figures are shown in table2-2.

Table A-2 Population of 8 Counties (2005)

County	Total Population (10,000 persons)			Urban Population (10,000 persons)		Rural Population (10,000 persons)	
	quantity	male	Female	quantity	female	quantity	female
Baiquan	57.7	29.7	28.0	8.15	4.1	49.5	24.5
Helen	82.4	42.1	40.3	16.8	8.4	65.6	32.1
Suiling	33.0	16.8	16.2	13.2	6.6	19.8	9.8
Qingan	40.0	21.0	19.0	10.2	4.1	29.9	14.4
Tieli	39.7	20.0	19.7	28.9	14.5	10.8	5.4
Tonghe	23.5	12.0	11.5	10.7	5.2	12.8	6.3
Linkou	43.8	22.3	21.4	13.1	6.6	30.6	15.0
Fangzheng	23.5	12.2	11.3	10.1	4.9	13.4	6.4
Taoshan Forestry Bureau	4.9	-	-	0.20	-	2.95	-

Data source: Each country statistical Yearbook 2005 and work report of government.

2.3 GDP and Average GDP of the 8 counties along the Highway

6. The average GDP of Tieli is the highest among the 8 counties, CNY7,604, while Baiquan is CNY4,251. General speaking, comparing with the national average economic level, the affected counties is weak. Table A-3 shows the GDP of the 8 counties.

Table A-3 GDP and average GDP of the 8 Counties

County	Local GDP(CNY10,000)	GDP Per Capita (Yuan per capita)
Linkou	270001	6072
Fangzheng	135324	5988
Tonghe	160122	7547
Tieli	293998	7604
Qingan	276300	6981
Suiling	183095	5583
Helen	366183	4452
Baiquan	237382	4251
Taoshan Forestry Bureau	11116	2269

Data source:Each country statistical Yearbook 2005 and government report

2.4 Analysis of the Industrial Structure of 8 Counties Along the Highway

7. It is indicated that the farming、forestry、herd and fish culture in the project region developed a bit quick and the industry development kept a good status .Oppositely, the service industry lagged. The basic figures of 3 dominate industries in 2005 was shown as below in Table2-4 and Figure A-1.

Table A-4 Key Economic Indicators of The 8 Counties In 2005

County	The Primary Industry (cny10,000)	The Manufacturing Industry(CNY10,000)	The Service Industry (CNY10,000)
Linkou	88343	71092	101864
Fangzheng	56356	25258	64386
Tonghe	64659	33339	62124
Tieli	81608	140260	72130
Qingan	92715	90205	93380
Suiling	85693	15929	39870
Helen	168636	56838	98379
Baiquan	102283	39115	97602
Taoshan Forestry Bureau	5225	5002	889

Data source:Each country statistical Yearbook 2005 and government report.

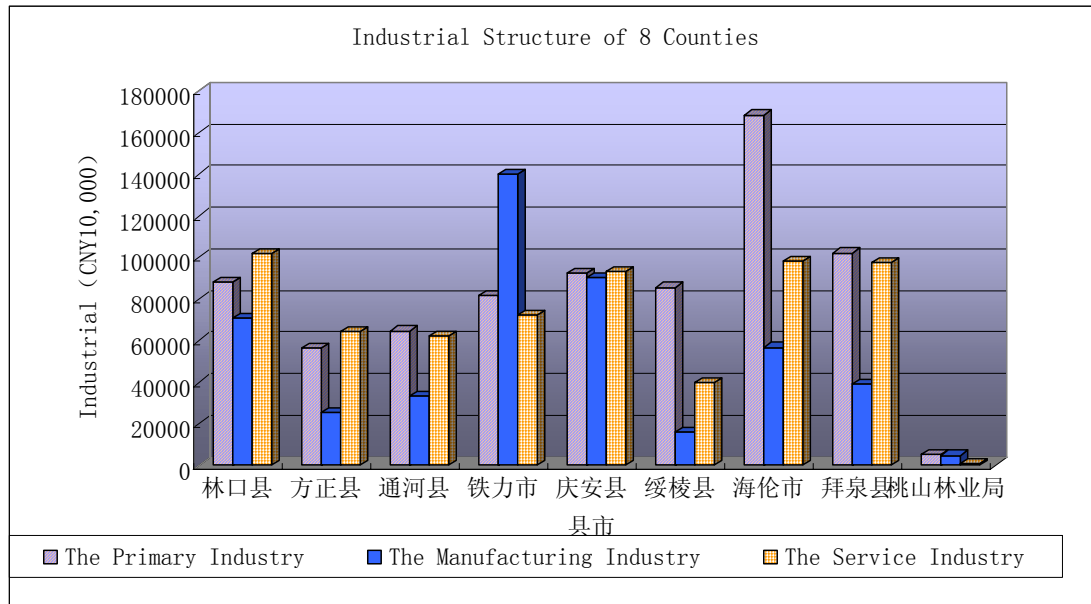


Figure A-1 Industrial Structure of 8 Counties

2.5 The First Industry

8. The plough acreage is abundant, but the average output is low. The statistics shows that the farmland of Hailun is the largest, while the farmland of Fangzheng is the smallest, moreover the insect pest disserved farmland of Fangzheng thus commissariat output is the least. (shown in Table A-5)

Table A-5 The First Industry

County	Total Production Value Of Agriculture (CNY10,000)	Total Production Value Of Forestry (CNY10,000)	Total farmland (Ha.)	Commissariat Output (Ton)
Linkou	95509	13116	107413	338746
Fangzheng	54151	16397	44113	281277
Tonghe	66035	12436	79828	327771
Tieli	76537	19081	72372	285245
Qingan	108357	1433	148832	620142
Suiling	70368	17883	105122	583370
Helen	206643	3182	269476	905214
Baiquan	126077	6078	235587	636785
Taoshan Forestry Bureau	9410	-	135616 (Forest Land)	45000

Data source: Each country statistical Yearbook 2005 and government report.

2.6 Residents' Income

9. The income of the 8 counties (municipalities) can be seen in Table A-6 and figure A-2. The distinction among the income dominated by per citizen is small, whereas, the rural per capita income differs large .Among the 8 counties (municipalities), the income of Baiquan which is the national poverty county is lowest. And the income of the peasants in Tonghe which is the provincial poverty county located a low level.

Table A-6 Income of 8 Counties In 2005

County	Rural Per Capita Income (Yuan/Person)	Average Income Of Urban Households By Region (Yuan)
Linkou	3950	4763
Fangzheng	3465	4958
Tonghe	1350	4871
Tieli	3636	4820
Qingan	3828	6100
Suiling	2401	3805
Helen	2752	4270
Baiquan	3950	4763
Taoshan Forestry Bureau	-	7200

Data source: 《Heilongjiang province statistical yearbook 2005》

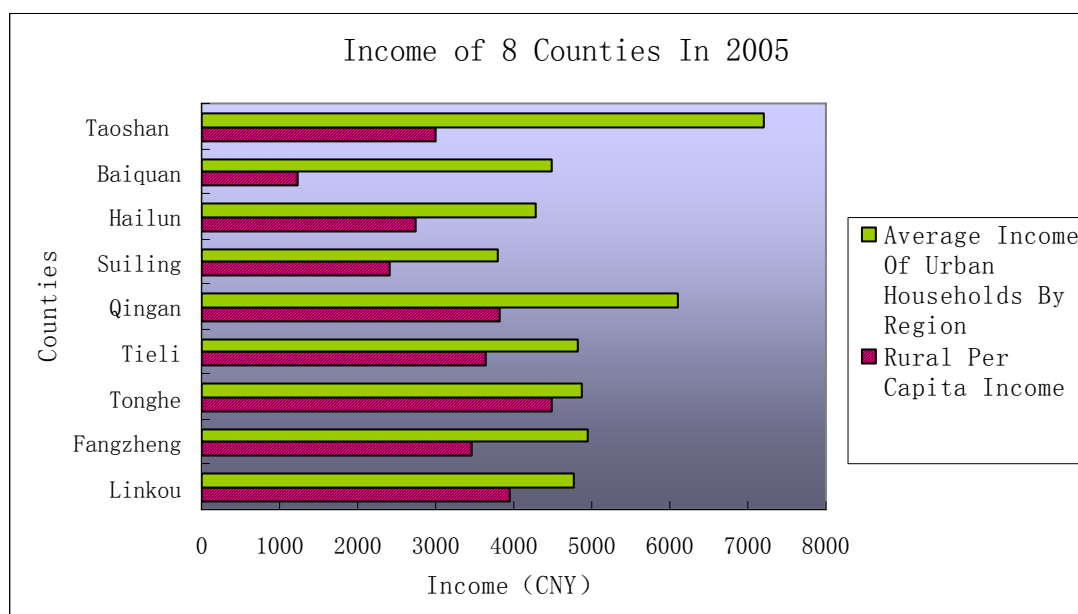


Figure A-2 Income of Counties in 2005

2.7 Education and Sanitation Situation of the 8 counties along the Highway

10. The education level of the 8 counties is preferable. The enrollment rate of the elementary school is 100% and that of the high school is above 98%, both of which illuminate that the governments paid fully attention to the nine year compulsory education. The distribution of the sanitation resource is imbalance. Hailun took up more sanitation than the others. The details are shown in Table2-7.

Table A-7 Education and Sanitation in 8 Counties in 2005

County	The Enrollment Rate Of The High School (%)	The Enrollment Rate Of The Elementary School (%)	The Number Of Sickbeds
Baiquan	98.7	100	584
Helen	97.6	100	1346
Suiling	97.5	100	652
Qing'An	99	100	264
Tieli	99	100	1015
Tonghe	98.4	100	663
Linkou	98.5	100	664
Fangzheng	99	100	657

Data Source: survey and investigation, filled by county stat. Bureau

2.8 Rural Poverty Situation of the 8 Counties

11. Along the highway Baiquan is a poor county at national level and Tonghe is a poor county at Heilongjiang provincial level. Thus the poor population along the highway accounts for quite large of the total population (Details can be seen in Table A-8). It is regarded that the construction of the highroad will be a good opportunity for development in the poverties' opinion, if the government reenacts some more assisted policy which can improve the living conditions there.

Table A-8 Rural Poverty Situations of the 8 Counties

County	Total Rural Labor Force (Ten Thousand)		Rural Poverty (Ten Thousand)		Rural Minority Poverty(Person)	
	Quantity	Female	Quantity	Female	Quantity	Female
Baiquan	24	11	12.5	7	-	-
Helen	24.5	9.8	6	2.1	9.92	3.97
Suiling	9.83	4.25	2.5	1.3	-	-
*Qing'An	14.15	5.67	2.32	0.93	166	86
*Tieli	4.64	1.98	0.32	0.14	-	-
*Tonghe	5.96	2.36	5.78	2.31	611	275
Linkou	16	7.3	1.3	0.48	320	145
Fangzheng	3.94	1.87	1.20	0.55	429	201

Data source: investigation and survey, the data was filled by county stat. Bureau.(shown * means the data in 2004)

2.9 Minority Distribution in the 8 Counties along the Highway

12. The minorities along the highroad is 110 thousand, occupied for 3.09% of the total, in which the Korea minorities is 10 thousand ,taken up 0.94% of the total and the Man minorities is 64 thousand, taken up 1.85% of the total, while the others is 11 thousand. The concrete figures are shown inTable2-9.

Table A-9 Minorities Distribution In 2005

County	The Project District	The Minorities		The Korea Minority		The Man Minority		Others	
	Total Population	Total Population	Female	Total Population	Female	Total Population	Female	Total Population	Female
Linkou	437514	31965	15660	8680	4200	20755	10200	2530	1260
Fangzheng	226000	4320	1950	3000	1300	500	260	820	390
Tonghe	235218	4991	2327	2730	306	1841	803	420	218
Tieli	397000	19850	9480	8160	4010	8680	4160	3010	1310
Qingan	400000	7200	3200	4860	2175	420	195	1920	830
Suiling	330255	5250	2435	2300	1050	2540	1160	410	225
Helen	824371	26120	12649	2180	1045	23510	11420	430	184
Baiquan	576796	7120	3500	310	150	5900	2900	910	450
Taoshan Forestry Bureau	49085	560	245	351	150	89	40	120	55
Total	3476239	107376	51446	32571	15386	64235	31138	10570	4922
The Percentage Of The Total	100%	3.09%	1.48%	0.94%	0.44%	1.85%	0.90%	0.30%	0.14%

Data source: statistics bureau in 8 counties, the minority religious bureau

2.10 Township Socio-economic Situations in the Affected Area

13. There are 36 villages and towns affected by the main road and the linking road of the project. The survey group surveyed 18 sample villages. The detailed socio-economic profiles are shown in table 2-11.

2.10.1 Population and Labor Force in the villages and towns

14. The detailed figures are shown in Table A-10.

Table A-10 The population and Labor Force of Affected Towns

village (town)	Number of villages	Households	Total population	female	Agricultural population	Total labor force population	Female labor force
Tonghe county							
Tonghe town		23777	65275	32576	21255		
Fengshan town	10	3667	11360	5367	10401		
Linkou county							
Jiantang village	25	4850	21700	11500	19540	10000	4000
Dioling town	26	9357	42453	20230	37373	25846	11628
Fangzheng county							
Songnan village	7	3039	12862	5260	8416	3520	
Deshan village	10	3647			13016	5123	
Baiquan county							
Sandao town	10	8274	28761	13235	28562	12645	6023
Baiquan town	9	5564	22251	10012	21964	13178	5120
Xingguo village	15	13625	53458	25645	48514	24918	10479
Helen city							
Yonghe village	15	8700	37500	18000	37000	24500	9200
Qianjin village	12	7950	35000	17300	34000	15000	7400
Hainan village	10	4600	20635	10200	19890	12000	9000
Suiling county							
Shangji town	9	5779	25491	12051	22753	12573	5622
Nierhe town	8	6429	23447	11249	23047	10988	5169
Qingan village							
Zhifu village	6	4990	22287	10819	22098	10300	5300
Jiusheng village	7	6135	24500	11893	23184	12415	5319
Tie li country							
Nianfeng village	11	2324	11419	5600	10619	8433	3800
WangYangvillage	-	-	15311	-	-	-	-

Data source: group research, statisticians in the villages and towns

2.10.2. Township GDP Level

15. The economic development of the 18 affected villages (towns) is extremely imbalanced and the polarization between the rich and the poor is large. (Shown in Table A-11).

Table A-11 GDP of the 18 affected villages (ten thousand)

item	Gross township output	First industry	Second industry	Tertiary industry	private business
Linkou county					
Jiantang village	17000	16400	500	100	
Diailing town	34564	25536	5000	4028	100
Fangzheng county					
Songnan village	28779	7500	15036	6243	
Deshan village	8776	4480	157	460	383
Tonghe county					
Tonghe town	59234	8165	43598	7471	
Fengshan town	11000	7300	2350	1350	
Tieli city					
Korean Nationality Town of Nianfeng	21587	10062	6205	5320	120
Wangyang village	24633	17343	4055	3235	35
Qingan county					
Jiusheng town	12635	9657	1278	1700	1100
Zhifu village	10000	6450	3418	132	100
Suiling county					
Shangji town	10698	8958	387	1353	453
Nierhe village	11571	8945	240	2386	102
Helen city					
Qianjin village	15080	14650	150	280	80
Yonghe village	17000	9000	4000	4000	2000
Hainan village	9180	7540	20	1620	1590
Baiquan county					
Baiquan town	7878	4063	1881	1934	1700
Xingguo village	8571	7533	118	920	260
Sandao town	44549	34929	4420	5200	2900

Data source: group research, statisticians in the villages and towns

2.10.3. Township Land Resource Actuality

16. Land resources of the 18 villages (towns) along the highway are shown in Table A-12.

Table A-12 Township Land Resource

villages (towns)	villages	households	Farmland (hm ²)			Farmland per farmer (hm ²)	forest land (hm ²)
			gross	Dry land (hm ²)	Irrigated land (hm ²)		
Linkou county							
Jiantang village	25	6916	76000	65000	11000	3.9	78160
Diaoling town	26	11962	217678	211393	419	4	
Fangzheng county							
Songnan village	7	3039	68756	3210	65546	5.35	
Deshan village	10	3647	80906	16235	64671	6.2	1700
Tonghe county							
Tonghe town	10	4188	122617	67776	54841	8	6850
Fengshan town	10	3667	80595	20987	59608	7.1	11600
Tieli city							
Korean Nationality Town of Nianfeng	11	2423	51750	12600	39150	4.5	
Wangyang village	9	4930	72000	18000	54000	4.7	
Qingan county							
Jiusheng town	7	5940	167000	155000	12000	6.8	3570
Zhifu village	6	5195	127703	19703	108000	5.6	12500
Suiling county							
Shangji town	9	5779	9643	2226	7417	6.3	
Nierhe village	8	6429	10126	3381	6745	6.48	17610
Helen city							
Qianjin village	15	6700	208740	199290	9450	7.5	20000
Yonghe village	12	7950	200000	18500	15000	6	15000
Hainan village	10	4600	135000	133500	1500	6.5	11500
Baiquan county							
Baiquan town	10	8274	146291	144591	1700	5	9104
Xingguo village	9	5564	162525	161580	945	5	63260
Sandao town	15	13625	296715	277875	18840	5.5	3380

Data Source: group research, statisticians in the villages and towns

2.10.4. Township Educational Resources and Standard

17. The educational standard in the 18 villages (towns) along the highway is shown in Table A-13.

Table A-13 Townships Educational Actuality

villages(towns)	Elementary school enrollment rate (%)	High school enrollment rate (%)	number of the teachers
Linkou county			
Jiantang village	100	100	148
Diaoling town	100	97	294
Fangzheng county			
Songnan village	100	98	143
Deshan village	100	100	150
Tonghe county			
Tonghe town	100	90	120
Fengshan town	100	98	211
Tieli city			
Korean Nationality Town of Nianfeng	100	100	56
Wangyang village	100	99	65
Qingan county			
Jiusheng town	100	100	402
Zhifu village	100	100	176
Suiling county			
Shangji town	100	100	294
Nierhe village	100	100	191
Helen city			
Qianjin village	100	100	257
Yonghe village	100	95	190
Hainan village	100	97	178
Baiquan county			
Baiquan town	100	100	164
Xingguo village	100	100	127
Sandao town	100	100	175

Data source: group research, statisticians in the villages and towns

2.10.5. Township Labor Export

18. Income of labor exportation is the main non-agricultural source. The detailed of the 18 villages (towns) is shown in Table A-14.

Table A-14 Township Labor Export

item	persons	Income (10,000 yuan)	outside the province (persons)	Inside the province (persons)
Linkou county				
Jiantang village	1674	1340	529	825
Diaoling town	1974	1579	1498	476
Fangzheng county				
Songnan village	168	73	8	168
Deshan village	667	300	276	391
Tonghe county				
Tonghe town	2847	986	373	2474
Fengshan town	1500	1000	700	800
Tieli city				
Korean Nationality Town of Nianfeng	6525	3915	4200	2325
Wangyang village	2987	637	1554	1433
Qingan county				
Jiusheng town	5400	3702	3261	2139
Zhifu village	4300	3200	400	3900
Suiling county				
Shangji town	6657	2547	4123	2534
Nierhe village	6002	2325	2016	3980
Helen city				
Qianjin village	7500	3000	5500	2000
Yonghe village	4500	1800	1500	3000
Hainan village	5400	1860	3800	1600
Baiquan county				
Baiquan town	2100	1000	1100	1000
Xingguo village	6700	3216	3090	3610
Sandao town	10458	4335	4816	5972

Data source: group research, statisticians in the villages and towns

3 Sample Survey on the Socio-economic Situation of the Affected Households

19. In January 2007, the socio-economic survey group had conducted a sample survey on 559 households in the 8 counties. 502 households affected by land acquisition, 46 households affected by house demolition, 1 household affected by relocating grave. Totally there were 549 households were surveyed.

20. The survey involved collecting primary data from selected villages and households. Two survey instruments were used: (1) a village questionnaire, administered to village leaders, and (2) a household questionnaire administered to individual households. The county and township officials provided full cooperation.

21. Distribution of the samples: total 559 households in 8 counties, total population of 2,128 people. 46 households (164 people) affected by house demolition, total 502 households (1939 people) affected by land acquisition, 1 household (5 people) affected by relocating grave. The survey samples are covered the project affected regions, and the typical sample is representative, can be used as the basis for project impact analysis

22. Table 3-1 provides a distribution of samples households among affected households in 8 project areas. Details can be seen in Table A-15.

Table A-15 Sample Distribution

Counties	The Involved Towns	The Involved Villages	No. of Households	Total Population	Ethnic Minority Households	Poverty Households
<i>Linkou</i>	2	3	93	326	0	13
Fangzheng	2	3	86	360	2	4
Tonghe	2	4	84	291	2	10
Tieli	2	7	68	257	9	20
Qingan	2	4	42	170	1	7
Suiling	2	2	45	206	1	2
Helen	3	3	58	210	1	4
Baiquan	3	3	54	214	0	6
Taoshan Forestry Bureau	2	2	29	94	0	4
Total	20	29	559	2128	16	70

3.1 Gender Features

23. In the random sample of 2,128 people, the male account for 51.6% total 1,096, the female account for 48.4% total 1,032. The gender structure of the residents along the highway is proper basically and there is little difference between the male and female proportion. The male is a little more than the female but the utter amount is not quite large.

Generally speaking, women in the project area basically have the similar social status with men. Family's important affairs are decided by husbands and wives. Due to the large average land possessions of the household, along with a not highly mechanized farming situation, women have to participate in agricultural cultivating work in common with men. The situation on land possession right in project affected area is the same as other areas in China. If a girl is married, her land will leave to her parents and cannot be brought with her to her husband's. She can only share the land with her husband's family. This easily leads to the problem of "more family members with less land" in some families.

24. The education opportunity between boys and girls is equal. However girls are prone to enter technical school for an employment as soon as possible after junior high school. While boys are more likely to be expected to enter senior high school and further be admitted to university.

25. The details can be seen in Table A-16.

Table A-16 Gender Proportion of the Sample Households

County	Total Population	Male		Female	
		Number	Percentage (%)	Number	Percentage (%)
Helen	210	108	51.4	102	48.6
Tonghe	291	152	52.2	139	47.8
Tieli	257	132	51.2	125	48.8
Fangzheng	360	185	51.3	175	48.7
Baiquan	214	110	51.2	104	48.8
Qingan	170	89	52.3	81	47.7
Linkou	326	167	51.1	159	48.9
Suiling	206	107	51.7	99	48.3
Taoshan Forestry Bureau	94	49	51.6	45	48.4
Total	2128	1096	51.6	1032	48.4

3.2 Age Structure Feature

26. Table A-17 showed out evidently that the survey residents aged from 17 to 30 accounts for 29.0% of the total farmers along the highway, those aged from 31 to 50 accounts for 33.3%, aged from 51 to 60 accounts for 13.2%, aged from 17 to 60 accounts for 75.5% and that the youth is a quite high proportion of the total population. The labor force is relatively rich enough to rehabilitate after land acquisition and relocation.

Table A-17 Age Structure of Sample Residents

County		0—6	7—16	17—30	31—50	51—60	above 60	Total
Helen	Number	13	27	59	67	36	8	210
	Percent (%)	6	13	28	32	17	4	9.9%
Tonghe	Number	15	44	81	96	41	15	291
	Percent (%)	5	15	28	33	14	5	13.7%
Tieli	Number	8	31	82	82	33	21	257
	Percent (%)	3	12	32	32	13	8	12.1%
Fangzheng	Number	14	40	130	108	43	25	360
	Percent (%)	4	11	36	30	12	7	16.9%
Baiquan	Number	9	30	66	66	28	15	214
	Percent (%)	4	14	31	31	13	7	10.1%
Qingan	Number	9	24	46	68	17	7	170
	Percent (%)	5	14	27	40	10	4	8.0%
Linkou	Number	13	39	85	108	42	39	326
	Percent (%)	4	12	26	33	13	12	15.3%
Suiling	Number	10	27	54	74	27	14	206
	Percent (%)	5	13	26	36	13	7	9.7%
Taoshan Forestry Bureau	Number	4	16	15	39	14	6	94
	Percent (%)	4	17	16	42	15	6	4.4%
Total	Number	93	277	618	709	281	150	2128
	Percent (%)	4.4%	13.0%	29.0%	33.3%	13.2%	7.0%	

3.3 Nationality Structure Feature

27. The nationality structure of the suevry sample householdes of 8 counties along the highway mainly consists of Han nationality and minority consists of Korean, and others. Due to the data from the survey, the nationality proportion of the project area is shown in Table A-18.

Table A-18 Nationality Structure of Sample Households

County	Han		Korean		Total
	No. of households	Percent (%)	No. of households	Percent (%)	No. of households
Helen	57	19.21%	1	1.72%	58
Tonghe	82	2.46%	2	2.38%	84
Tieli	59	12.19%	9	13.24%	68
Fangzheng	84	9.48%	2	2.33%	86
Baiquan	54	10.71%			54
Qing'an	41	14.66%	1	2.38%	42
Linkou	93	9.61%			93
Suiling	44	8.37%	1	2.22%	45
Taoshan forestry bureau	29	3.69%			29
total	752	92.61%	51	6.35%	803

3.4 Educational Degree Feature

28. Among the affected Persons of the 559 households surveyed in the 8 counties along the Highway the educational degree of those who are 6 years old (6 included) is shown as follows, those who are illiterate or semiliterate accounts for 5.7%, those who have got primary school degree accounts for 31.4%, those who have got junior middle school degree accounts for 50% and those who have got senior middle school and above accounts for 12.9%. Along the highway most is rural area, the educational degree of the farmers is mainly primary or junior middle schooling, especially those who have got junior middle school degree accounts for the most part.

Table A-19 Educational Degree Proportion of the Sample Households

County	Total Population	Illiteracy	Elementary School	High School	Senior High School	Vocational School	Senior Vocational School
Linkou	326	21	119	152	27	3	3
	%	6.5	36.6	45.8	8.2	1.0	1.0
Fangzheng	360	29	121	167	35	6	1
	%	8.1	33.6	46.4	9.8	1.6	0.4
Tonghe	291	14	92	154	20	7	4
	%	4.9	31.6	52.8	6.9	2.4	1.4
Tieli	257	13	55	150	33	4	1
	%	5.1	21.5	58.2	13.0	1.7	0.6
Qing'An	170	5	59	83	17	5	1
	%	3.1	34.6	49.0	9.9	2.7	0.7
Suiling	206	9	76	94	22	3	2
	%	4.3	36.9	45.5	10.8	1.4	1.1
Hailun	210	11	59	119	18	1	1
	%	5.5	28.2	56.7	8.8	0.6	0.3
Baiquan	214	12	66	109	21	3	4
	%	5.6	30.7	50.5	9.9	1.2	1.9
Taoshan Forestry Bureau	94	6	20	37	14	5	10
	%	6.5	21.7	39.2	15.2	5.4	10.9
Total	2128	121	668	1064	208	37	29
	%	5.7	31.4	50.0	9.8	1.8	1.3

3.5 Employment Feature

29. Inhabitants living along the highway basically are agricultural population, who engaged in planting and breeding. Embarking on the agriculture is the major fashion of employment for the local people. We can validate it correspondingly from the income constitutes of the peasants. In the idle farming seasons, many farmers go out to hunt a job. Although the income of the secondary industry and the service industry offer a certain income, most of which arise from being employed by others, in contrast, the income from the salaries and the secondary industry is a little. As a result, the proportion of the population who engage in the secondary industry and tertiary industry is small.

30. There will be a convenient transportation and faster commodities circulation both of which can attract many local labors transferred to the secondary and tertiary industry to explore the new employment approach and income source after the high road built up.

Table A-20 Annual Income and Its Proportion of the Sample APs

County	Net Income	Income from crops		Income from stock-raising		Forestry		Income from labor service ¹		Income from wage		Others	
		Amount (Y)	%	Amount(Y)	%	Amount(Y)	%	Amount(Y)	%	Amount(Y)	%	Amount (Y)	%
Helen	4128	2291.04	55.5	237.7728	5.76	25.5936	0.62	1221.888	29.6	260.064	6.3	91.6416	2.22
Tonghe	2325	1925.1	82.8	103.9275	4.47	17.4375	0.75	176.7	7.6	101.835	4.38	0	
Tieli	5454	3403.296	62.4	662.661	12.15	0		465.2262	8.53	186.5268	3.42	736.29	13.5
Fangzheng	5197.5	3082.1175	59.3	218.295	4.2	0		1829.52	35.2	36.3825	0.7	31.185	0.6
Baiquan	2249.5	1689.3745	75.1	166.9129	7.42	11.92235	0.53	229.449	10.2	55.11275	2.45	96.7285	4.3
Qing'An	5742	4277.79	74.5	381.2688	6.64	0		660.33	11.5	264.132	4.6	158.4792	2.76
Linkou	5925	4461.525	75.3	331.8	5.6	49.1775	0.83	623.31	10.52	316.9875	5.35	142.2	2.4
Suiling	3601.5	2690.3205	74.7	237.699	6.6	31.33305	0.87	426.4176	11.84	156.3051	4.34	56.1834	1.56
Taoshan Forestry Bureau	3291	2372.811	72.1	0		0		85.566	2.6	832.623	25.3	0	
Total	4212.6	2910.4	70.2	260.0	5.9	15.1	0.4	635.4	14.2	245.6	6.3	145.9	3.0

3.6 Income Situation

31. The following table presents the distribution of household net income in the surveyed villages and households.

3.7 Expense Structure

32. The expense structure of the sample households is consistent with the income standard of the farmers in the current period. It can be seen from Table A-21 that the consumptive structure, the living expense is quite higher than the productive expense and the living expense is headed by the grains expense. Details can be seen in Table A-21.

Table A-21 Living Consumptive Expense of the Sample Households

District	The No. Of HHS	Production expense						The Consumption Of The Daily Life	
		Total		The Outlay Of The Agriculture Industry		The Secondary Industry And The Tertiary Industry		Quantity (CNY)	Percent%
	Expend	Quantity (CNY)	Percent%	Quantity (CNY)	Percent%	Quantity (CNY)	Percent %		
Linkou	942850	290960	30.86%	249419	26.45%	41541	4.41%	651890	69.14%
Fangzheng	1273260	287900	22.61%	232799	18.28%	55101	4.33%	985360	77.39%
Tonghe	788615	266520	33.80%	225332	28.57%	41188	5.22%	522095	66.20%
Tieli	1017620	365100	35.88%	319580	31.40%	45520	4.47%	652520	64.12%
Qing'An	628846	189500	30.13%	166942	26.55%	22558	3.59%	439346	69.87%
Suiling	701070	178200	25.42%	160187	22.85%	18013	2.57%	522870	74.58%
Helen	663440	134200	20.23%	114747	17.30%	19453	2.93%	529240	79.77%
Baiquan	522870	122150	23.36%	118124	22.59%	4026	0.77%	400720	76.64%
Taoshan Forestry Bureau	196486	69450	35.35%	69266	35.25%	184	0.09%	127036	64.65%
Average	748340	211553	28.63%	184044	25.47%	27509	3.15%	536786	71.37%