

RSDD

Regional and Sustainable Development Department

Orientation Program for DMC Officials

Bindu N. Lohani

Director General and Chief Compliance Officer, RSDD

6 September 2006

ADB

Today's Discussion

I. Background

II. Mission

III. Mandates

IV. Key Result Areas

V. Organizational Structure

Background

RSDD was created during the Reorganization in 2002

- Acted as a center for quality, compliance and knowledge, providing horizontal linkages across the bank and with the region

RSDD was recently reorganized in July 2005

- Response to the outcome of extensive internal consultations and deliberations
- Other developments within and outside ADB called for a new role for RSDD

Mission

“Promote quality, knowledge and innovation for sustainable development”

Mandates

- Support quality enhancement and innovation of key sector operations
- Promote sustainability and inclusiveness of ADB investment
- Improve knowledge management at ADB
- Drive the renewal of ADB's key business

KRA 1: Support Quality and Compliance in ADB Operations (1)

- Continue to provide upstream support to operations through technical, strategic and knowledge contributions
- Rationalize policies and strategies
- Support due diligence and compliance responsibilities for projects
- Support project implementation on a selective basis

KRA 1: Support Quality and Compliance in ADB Operations (2)

RSDD Coverage

Sectors

- Education
(e-learning and science & technology)
- Energy
- Health (HIV/AIDS)
- Transport
- Water

Themes

- Poverty Reduction
- Environment
- Social Safeguards
- Governance
- Capacity Development
- Financial Management
- Emergency Preparedness
- Gender and Development
- Social Development
- NGO Cooperation
- Knowledge Management

KRA 2: Knowledge Support (1)

- Promote knowledge development and sharing within ADB and the region
- Act as focal point for the RSDD sectors and thematic areas
- Anchor Communities of Practice

KRA 2: Knowledge Support (2)

Communities of Practice

CoP	Chair
Education	R. Wihtol
Energy	S. Chander & A. Terway
Environment	N. Ahmad
Finance & Trade	R. Bestani & M. Kawai
Gender & Social Development	S. Lateef
Governance	K. Gerhaeusser
Health	I. Bhushan
Regional Cooperation & Integration	R. Nag & P. Rana
Transport	N. Rayner
Water	A. Thapan

KRA 2: Knowledge Support (3)

- Implementation of the KM Framework
- Good Practices, Technical Notes, Issues Papers
- KM Help Desk
- RSDD Eminent Speaker's Forum
- Knowledge hubs
- Sector and thematic reports
- 3-Year KPS Work Plan

KRA 3: Innovation Services (1)

- Ensure ADB is at the forefront of key development issues
- Create new business opportunities and development approaches for ADB in its work with DMCs and with development partners

KRA 3: Innovation Services (2)

Energy Efficiency Initiative

- Rationale: Launched July 2005 to compile and analyze existing knowledge and experience on energy efficiency policies, and formulate a **clean energy investment strategy**
- Implementation: Phase 1 (initiation) completed; Phase 2 (follow-up) ongoing; Phase 3 (implementation)
- Indicative **annual lending target of \$1 billion**
- Select projects consistent with DMC policies, priorities and targets
- Value pioneering, replicable and scalable and investment models
- Establish **Asia-Pacific Clean Energy Fund**

KRA 3: Innovation Services (3)

Carbon Market Initiative

- Aimed at working with **suppliers and purchasers** of carbon credits associated with ADB's project portfolio
- Builds upon and complements existing ADB investment programs covering financing and technical assistance. It focuses specifically on **projects with CDM content**.
- **3 components**: (i) Carbon Fund, (ii) Carbon Marketing Service, and (iii) Technical support for project teams and sponsors.

KRA 3: Innovation Services (4)

Water Financing Program

- Seeks to make water a core investment area for ADB
- Proposes to increase its water investments to well over \$2 billion annually.
- Investment priority areas: rural water, urban water, and basin water
- Establish Water Financing Partnership Facility (WFPP)

KRA 3: Innovation Services (5)

Urban Services Initiative

- Support the construction of 20,000 new dwellings, 250 km of new roads, and additional infrastructure to supply more than 6 kilolitres of potable water
- ADB has the following primary building blocks for this initiative: (i) Managing Asian Cities, (ii) Water for All, (iii) Transport and Energy Strategies, (iv) Carbon Market Initiative, (v) Partnerships with GDC and Cities Alliance

KRA 3: Innovation Services (6)

Community-Driven Development

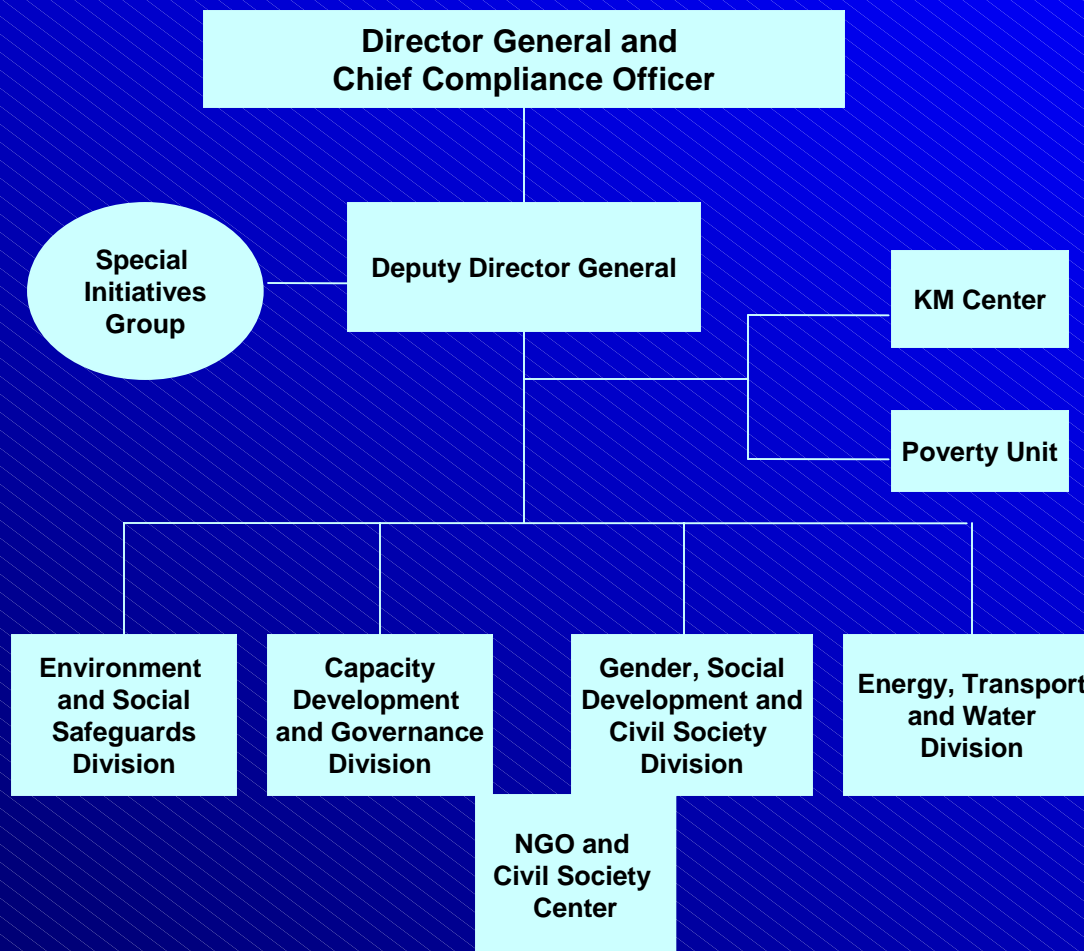
- In the short-term, proposes ADB to undertake a pilot program which would allow ADB to experiment with innovative new approaches and catalog findings through “learning by doing”
- In the medium-term, proposes to improve the quality and increase the quantity of CDD operations

KRA 3: Innovation Services (7)

Governance Initiative

- Currently being developed under a RETA, following the approval of the Second Governance and Anticorruption Action Plan
- Identify methodologies and tools for the conduct of governance, institutional, and corruption risk assessments at the CSP and project level

Organizational Structure



4 Divisions and 4 Centers/Units

RSDD Presentations

Poverty Reduction and Achieving the MDGS	Shiladitya Chatterjee Head, Poverty Unit
Knowledge Management	Daan Boom Principal Knowledge Management Specialist, KM Center
Environmental and Social Safeguards	Nessim Ahmad Director, RSES
Capacity Development and Governance	Raza Ahmad Governance Specialist, RSCG
Gender, Social Development, NGOs and Civil Society	Robert Dobias Director, RSGS
Energy, Transport, and Water	Samuel Tumiwa Senior Energy Sector Specialist, RSID

For more information on topics covered by RSDD, you may also visit the following websites:

Clean Development Mechanism	http://www.adb.org/CDMF/default.asp
Disaster and Emergency Preparedness	http://www.adb.org/Tsunami/default.asp
Education	http://www.adb.org/Education/default.asp
Energy	http://adbweb/spd/policies-strategies.asp http://www.adb.org/REACH/default.asp
Environment and Safeguards	http://www.adb.org/Environment/default.asp http://www.adb.org/IndigenousPeoples/default.asp http://www.adb.org/Resettlement/default.asp http://www.adb.org/Safeguards/default.asp http://www.adb.org/Vehicle-Emissions/default.asp http://www.adb.org/projects/pep/
Gender and Development	http://www.adb.org/Gender/default.asp
Governance	http://www.adb.org/Governance/default.asp
Health	http://www.adb.org/Health/default.asp http://www.adb.org/BirdFlu/default.asp http://www.adb.org/HIV-AIDS/default.asp http://www.adb.org/Nutrition/default.asp
Knowledge Management	http://www.adb.org/Knowledge-Management/default.asp http://www.adb.org/about/cops.asp
NGO/Civil Society Cooperation	http://www.adb.org/NGOs/default.asp
Poverty Reduction and Millennium Development Goals	http://www.adb.org/MDGs/default.asp http://www.adb.org/Poverty/default.asp
Social Protection	http://www.adb.org/SocialProtection/default.asp
Transport	http://adbweb/spd/policies-strategies.asp
Urban Development	http://www.adb.org/urbandev/default.asp
Water	http://www.adb.org/Water/default.asp