



Kecamatan Action Planning

In November 2006, Black & Veatch began implementing the Earthquake and Tsunami Emergency Support Package 24 (ETESP-24) which focuses on Spatial Planning and Environmental Management (SPEM). It is part of a suite of rehabilitation and redevelopment projects funded by the Asian Development Bank (ADB) and coordinated by the Government of Indonesia's (GoI) Rehabilitation and Reconstruction Agency for Nanggroe Aceh Darussalam and Nias Island (Badan Rehabilitasi dan Rekonstruksi NAD-Nias / BRR).

The overarching aim is to support the rebuilding of Aceh and Nias areas affected by the 2004 tsunami and 2005 earthquake consistent with GoI regulations and the Millennium Development Goals (MDG).

ETESP-24 will focus on preparing comprehensive Kecamatan (sub-district) Spatial Framework and Action Plans (KSF-APs) that combine information about infrastructure, livelihoods and environment for selected Kecamatan. Geographical Information System (GIS) technology will be used to provide up to date base maps and produce spatial information for the KSF-APs. In the second phase ETESP-24 will contribute to establishing a provincial spatial information center. ETESP-24 is based on a process developed in a previous package, ETESP-6, that consolidates a broad spectrum of issues, information and stakeholder views as a basis for developing action plans.

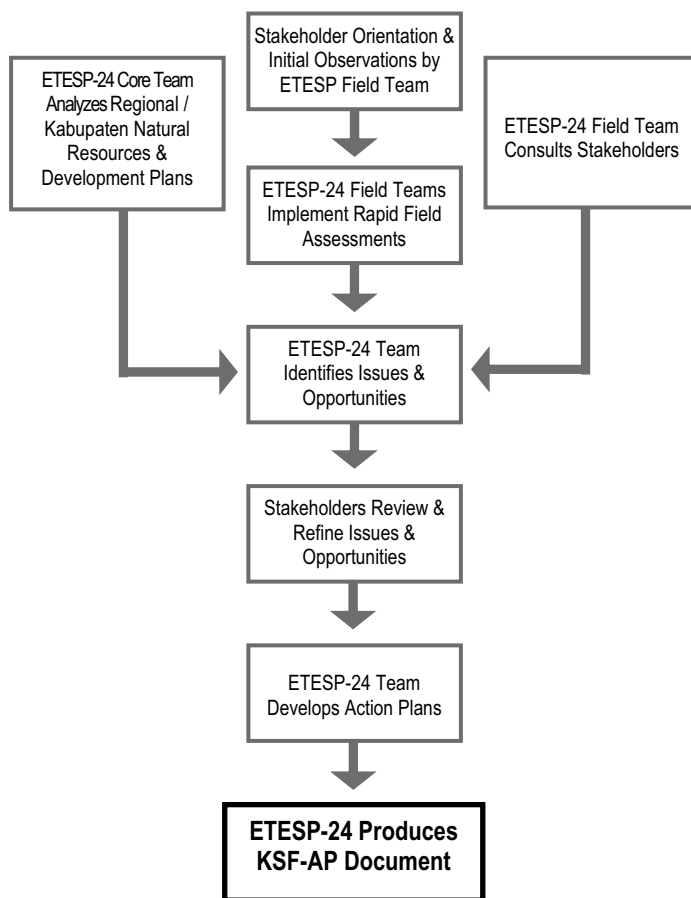
ETESP-24 Areas

BRR has designated 20 Kecamatan in Kabupaten (district) Aceh Selatan, Simeulue and Nias for ETESP-24's focus.



Process

The ETESP spatial planning process analyzes existing data, field survey results, and stakeholder views resulting in a comprehensive plan for the future. A Core Team in Banda Aceh consolidates existing data and supports Kecamatan based Field Teams. The Field Teams verify information and gather new data through meetings, questionnaires and focus group discussions. Crucial is consulting with provincial, district, sub-district and village stakeholders, such as, government administrators, planning agencies and organizations, informal and traditional community leaders plus, non-governmental organizations for their inputs and feedback so the plan's content more accurately represents local needs and priorities.



Outputs

Kecamatan Spatial Framework and Action Plans (KSF-APs) will be the project's primary outputs. A KSF-AP will be prepared for each ETESP-24 Kecamatan. They will consolidate Kabupaten and Kecamatan level information on:

- Population.
- Land use.
- Economic activities and livelihoods.
- Environment and natural resources.
- Government / institutional frameworks.
- Existing infrastructure and natural resources.
- Proposed infrastructure, livelihoods and environmental projects.

Key information and proposed projects will be displayed in maps, charts and diagrams for each Kecamatan. All of the information, assessments and recommendations will be compiled into an

easy to use, practical format that provides a broad picture of a Kecamatan's realities, needs and potentials.

Benefits

The KSF-APs are expected to be a useful guide so that Kabupaten and Kecamatan government officials, village leaders, community groups and non-governmental organizations will be able to better focus and direct rehabilitation and reconstruction in the tsunami and earthquake affected Kecamatan. Each volume will be a basis for more detailed, targeted and coordinated planning by Gol and its development partners.

ETESP-24 Field and Core Teams will also work with counterparts and stakeholders to fine-tune a participatory process that has proven effective in the field. ETESP-24 is unique in consolidating previous assessments and data, using new technologies, working with different levels of Gol institutions to verify needs and priorities on the ground and, also, incorporating community concerns. The process would be a model for making future assessments more effective.

Contact Information

For further information about ETESP-24 SPEM, please contact:

ADB Extended Mission in Sumatera
Head of ADB-EMS
Jln. Cut Nyak Dhien 375, Lamteumen Timur
Banda Aceh, NAD 23236
T: 0651 41429 F: 0651 45773
www.adb.org

or

BRR NAD-Nias
Deputy of Housing and Settlements
Jln. Muh. Thaher 20, Leung Bata
Banda Aceh, NAD 23247
T: 0651 636666 F: 0651 637777
www.brr.go.id