

**SOUTHEAST
ASIA
DEPARTMENT**

Tom Crouch

Deputy Director General, SERD

10 October 2008

**Orientation
Program for
DMC
Officials**

Manila

6-24 October 2008

ADB

Southeast Asia

- Brunei Darussalam
- Cambodia
- Indonesia
- Lao PDR
- Malaysia
- Myanmar
- Philippines
- Singapore
- Thailand
- Viet Nam

An extraordinarily diverse group of countries

Socioeconomic Indicators Show the Diversity and the Development Challenge

Southeast Asia Countries

DMC	Population (M persons) 2007	GDP Growth Rate (%) per year) 2007	Per Capita GDP (US\$) 2007	Unemployment (%) 2007	Inflation (% per year) 2007	Foreign Direct Investment Inflows (US\$ M) 2007	Poverty Incidence: Based on national poverty line (%)
Brunei Darussalam	0.4	0.6	31495.0	3.4	0.3	184.0	—
Cambodia	14.4	10.2	601.0	—	5.9	867.0	34.7 (2004)
Indonesia	224.9	6.3	1924.0	9.8	6.4	6928.0	16.7 (2004)
Lao PDR	5.9	7.5	697.0	—	4.5	324.0	32.7 (2003)
Malaysia	27.2	6.3	6867.0	3.2	2.0	8403.0	5.1 (2002)
Myanmar	57.7	—	—	—	35.0	428.0	26.6 (2001)
Philippines	88.6	7.2	1626.0	6.3	2.3	2928.0	30.0 (2003)
Singapore	4.6	7.7	35163.0	2.9	2.1	24137.0	—
Thailand	65.8	4.8	3738.0	1.4	2.3	9575.0	9.8 (2002)
Viet Nam	85.2	8.5	830.0	2.0	8.3	6739.0	19.5 (2004)

— means data not available

Source: Asian Development Outlook Update 2008, ADB; Key Indicators 2008, ADB; General Statistics Office of Viet Nam; and World Investment Report 2008, UNCTAD.

ADB-Southeast Asia Engagement: what's it all about?

Impact – doing the right things
(relevance) *and* doing things right
(effectiveness)

Partnerships – ownership,
alignment, harmonization, joint
accountability

Some Partnership Dimensions

SEA countries as ...

- **Owners** — shareholding; Board constituencies; influencing the policy agenda
- **Clients** — accessing finance and knowledge
- **Suppliers** — business opportunities; winning contracts

SEA as OWNERS: Voting Power (%)

BRU (2006)	0.58
CAM (1966)	0.34
INO (1966)	4.65
LAO (1966)	0.31
MAL (1966)	2.47
MYA (1973)	0.73
PHI (1966)	2.20
SIN (1966)	0.57
THA (1966)	1.39
VIE (1966)	0.57

Source: www.adb.org

SEA as OWNERS: Board Constituencies

- BRU, MAL, MYA, NEP, SIN, THA
- KOR, PNG, SRI, TAI, UZB, VAN, VIE
- KAZ, MLD, MAR. MON, PAK, PHI, TLE
- AUS, AZE, CAM, GEO, HKG, KIR, MIC, NAU, PAL, SOL, TUV
- COO, FIJ, INO, KGZ, NEW, SAM, TON
- AFG, BAN, BHU, IND, LAO, TAJ, TUR

Red = executive director; yellow = alternate

SEA as CLIENTS: Accessing resources

OCR only: INO (from 1 Jan 2009); MAL; PHI;
THA

ADF only: CAM (blend grant-loan); LAO (grant
only); MYA

ADF-OCR Blend: INO (to 31 Dec 2008); VIE

Graduated: SIN

Unclassified: BRU

SEA as CLIENTS: Loan and Grant Approvals, 2005-2011 (\$m)

	2005-2007 average		2008		2009-2010 average	
CWRD	1858	(22%)	2324	(20%)	2633	(22%)
EARD	1406	(17%)	1522	(13%)	1479	(13%)
PARD	94	(1%)	189	(2%)	264	(2%)
SARD	1985	(23%)	3021	(26%)	3354	(28%)
SERD	2184	(26%)	3030	(26%)	2720	(24%)
PSOD	931	(11%)	1529	(13%)	1350	(11%)
ADB	8467		11615		11799	

Source: ADB. 2008. *Work Plan and Budget Framework 2009-2011*

SEA as CLIENTS: Net Resource Transfers

(OCR and ADF, \$ million)

Country	1998-2002 Average	2002	2003	2004	2005	2006	2007
CAM	45.08	76.40	68.40	70.87	76.73	45.06	45.65
INO	272.41	115.78	(402.07)	(253.74)	142.80	79.59	248.18
LAO	42.34	37.65	40.53	31.00	72.84	60.70	62.37
MAL	(39.51)	(49.42)	(69.04)	(59.48)	(52.99)	(66.85)	(37.11)
MYA	(0.07)	—	(1.44)	—	—	—	—
PHI	(150.03)	(196.71)	(72.25)	(218.54)	(118.94)	268.45	45.88
SIN	—	—	—	—	—	—	—
THA	(304.72)	(1,462.42)	(226.78)	(102.22)	(394.42)	(120.78)	(55.06)
VIE	185.62	223.03	280.31	167.59	181.62	132.13	166.40
TOTAL	375.09	(1,255.69)	(382.34)	(364.52)	(92.36)	398.30	476.31

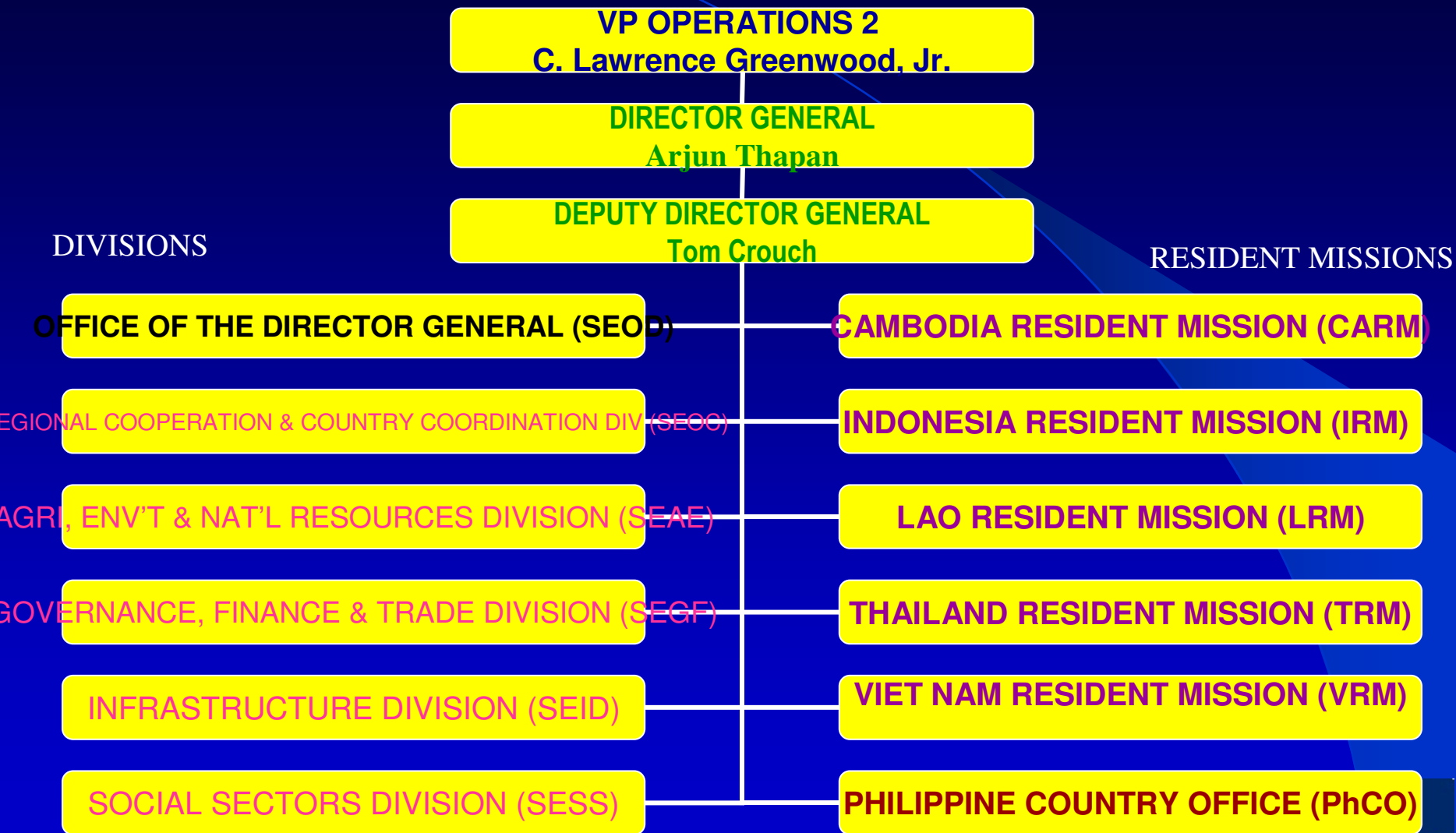
SEA as CLIENTS: accessing knowledge

- Much more to development than financial muscle
- ADB as a primary source of development knowledge in the region

SEA as SUPPLIERS: goods, works, consulting services (1967-Mar 2008, \$m and %)

	Goods & Works		Consulting Services		Total		Rank
BRU	15	(.02)	0		15	(0)	54
CAM	273	(0.3)	19	(.3)	292	(.3)	34
INO	7408	(8.4)	596	(8.7)	8004	(8.4)	4
LAO	303	(.3)	19	(.3)	322	(.3)	32
MAL	2117	(2.4)	43	(.6)	2159	(2.3)	14
MYA	46	(.1)	2	(0)	48	(.1)	47
PHI	2548	(2.9)	296	(4.3)	2844	(3)	10
SIN	2165	(2.4)	52	(.7)	2217	(2.3)	13
THA	2297	(2.6)	58	(.8)	2355	(2.5)	11
VIE	1340	(1.5)	37	(.5)	1377	(1.4)	19

SERD Organizational Chart



GREATER MEKONG SUBREGION



Archipelagic Southeast Asia (aSEA)



The Sub-regional Dimension



SOME CHALLENGES

- Implementing ADB's Long Term Strategic Framework (Strategy 2020)
- Meeting the needs of middle income countries
- Being nimble enough to assist in addressing unexpected shocks
- Strengthening collaboration with other development partners
- Strengthening resident missions