

# **Pasig River Environmental Management and Rehabilitation Sector Development Program**

Orientation program DMC officials  
Briefing field visit 15 Oct 2008

Paul van Klaveren  
Water Supply and Sanitation Specialist  
Southeast Asia Social Sector Division  
Asian Development Bank

The logo of the Asian Development Bank (ADB) is located in the bottom right corner. It consists of the letters "ADB" in a white, serif font, set against a dark blue square background.

ADB



# Basic data

<b>Approval Amount:</b>	
-Program Loan (L1745-PHI) -Project Loan (L1746-PHI) -TA	-US\$100 million (OCR) -US\$75 million (OCR) -US\$1 million
<b>Approval Date:</b>	-20 July 2000
<b>Executing / Implementing Agency:</b>	
-Program Loan -Project Loan	-Department of Finance -Pasig River Rehabilitation Commission – Department of Environment and Natural Resources -Subloan agreements
<b>Status:</b>	
-Program Loan -Project Loan	-Closed (11 December 2003) -Closed (original closing date 31 January 2006, revised date 30 September 2008)

# Goal & outcome

- promote policy reforms and physical improvements
- enhance the water quality of the Pasig River, its tributaries, to Class C standard by 2014
- improved water quality of the Pasig River through reduction of pollution loading to the river.

Class C standard river water is

- capable of sustaining aquatic life,
- is suitable for secondary contact sports,
- after treatment, may be used for industrial processes.

# L1745: Policy Framework and Actions

approving, adopting, and implementing the first phase of the Pasig River Development Plan from 2000-2004;

establishment of a wastewater discharge permit system

domestic solid waste management for riverside barangays;

environmental regulations and discharge standards;

strengthening the water quality monitoring and enforcement capability and capacity;

enhancing public awareness of environmental issues; and

strengthening the institutional capacity of agencies concerned

# L1746: Investments

sanitation services

- SLA MWSS
- STP
- vacuum trucks

establishing environmental preservation areas

- linear parks, revetment walls, ferry stations
- resettlement – housing, schools and day care centers

urban renewal in adjacent areas

- SLA City of Mandaluyong
- on site relocation: housing units, school

# Lessons

Delays: resettlement – off site : need for livelihood and community facilities

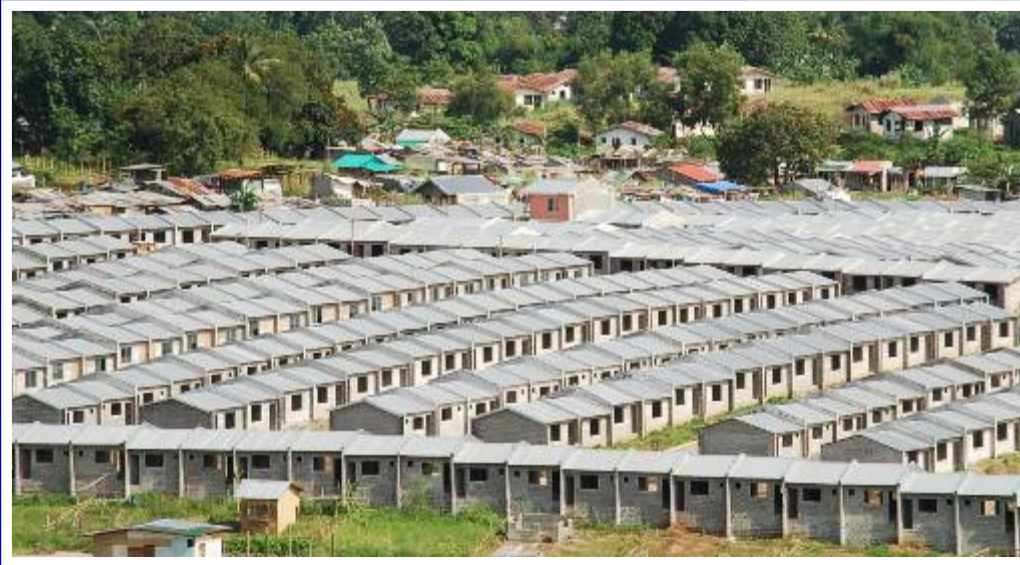
Non – completion and cancellation : inter agency communication (URAs) political support (STP)

EPAs : successful? Maintenance!



ADB

# Rehabilitation Projects



PRRC resettlement sites Cardinal Sin Village in Punta, Sta. Ana, Manila and Rodriguez, Rizal

# EPA



PUP Linear Park

# EPA



Hulo Linear Park  
Mandaluyong City



West Rembo Linear Park  
Pasig City

# For more information

Paul van Klaveren  
[pvanklaveren@adb.org](mailto:pvanklaveren@adb.org)

ADB